

RUGS

www.rogeroates.com

Designed, woven and finished in the United Kingdom





DEFINED BY OUR DISTINGUISHED COLOUR PALETTE, TRADITIONAL WEAVE AND SIGNATURE STRIPES, OUR RUGS ARE AS RICH IN COLOUR AND TEXTURE AS THEY ARE IN HERITAGE.

We have been producing flatweave rugs for over 30 years. Our human approach to making involves skilled weavers and craftspeople at every stage.

Each rug is made to order and masterfully sewn by a skilled team in our Herefordshire workshop.

A British cheviot wool blend yarn is woven on specially adapted Hattersley looms to produce flatweave runners. Their natural woven edges and repeating stripes are ideal for joining by hand to create bespoke rugs.

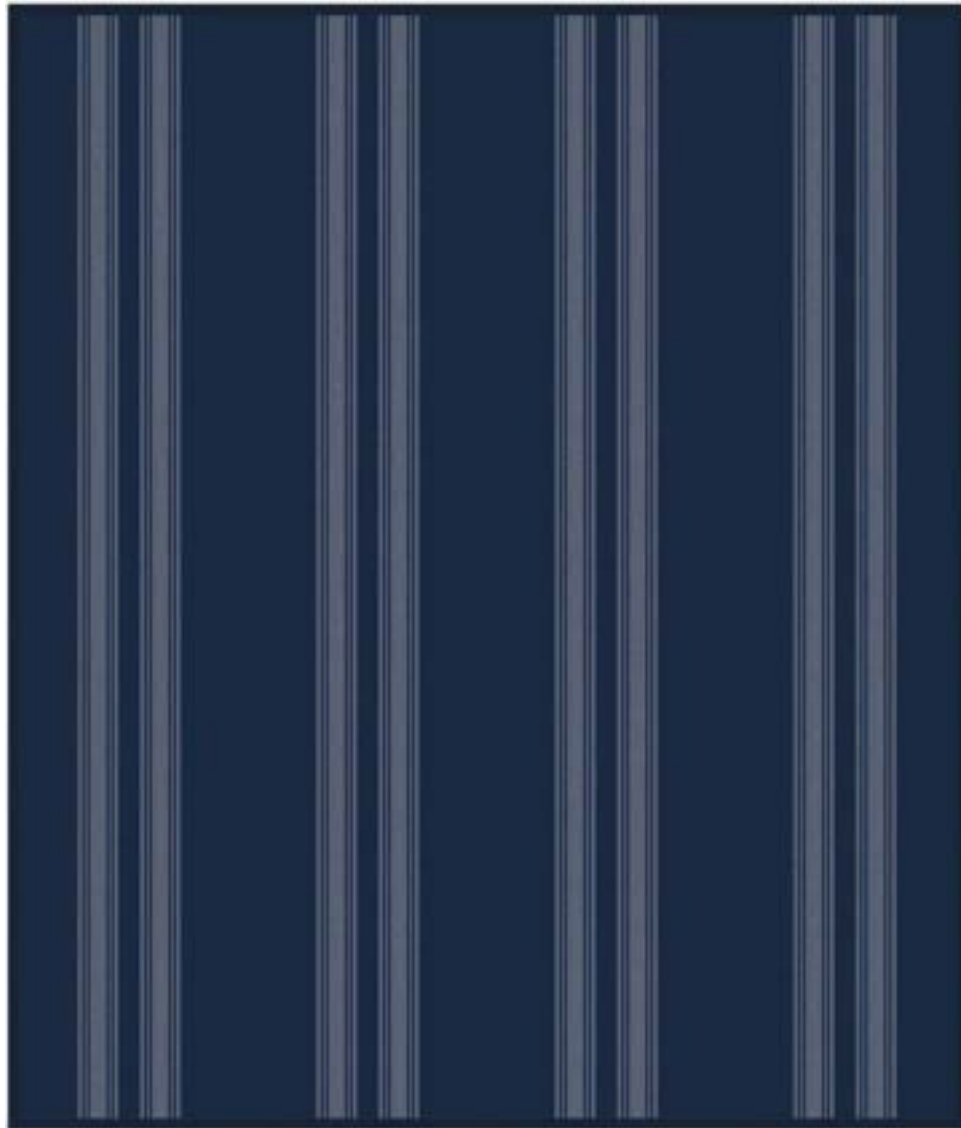
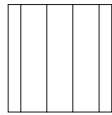
Stripes create the illusion of lengthening or widening a room depending on how the widths of flatweave are joined together. We can also use combinations of 'border' and 'ground' designs in varying colourways to create effective bespoke striped patterns. Simple fine lines and bold stripes in vibrant brights and sophisticated neutrals offer options to furnish any room.

In addition, our Tapis d'Avignon rugs are made from a beautifully soft, heavily felted Mouflon wool. Available in a diverse collection of colours; each bespoke rug is joined and edged with a blanket stitch of a complementary tone.

The examples shown in this brochure showcase a small selection of the possibilities available. Each design can be customised to any specific requirement. For more information on colourways, design combinations and sizes, please visit our website or contact our sales team.

Flatweave Rugs	p2
Tapis d' Avignon	p66
Rug Index	p80



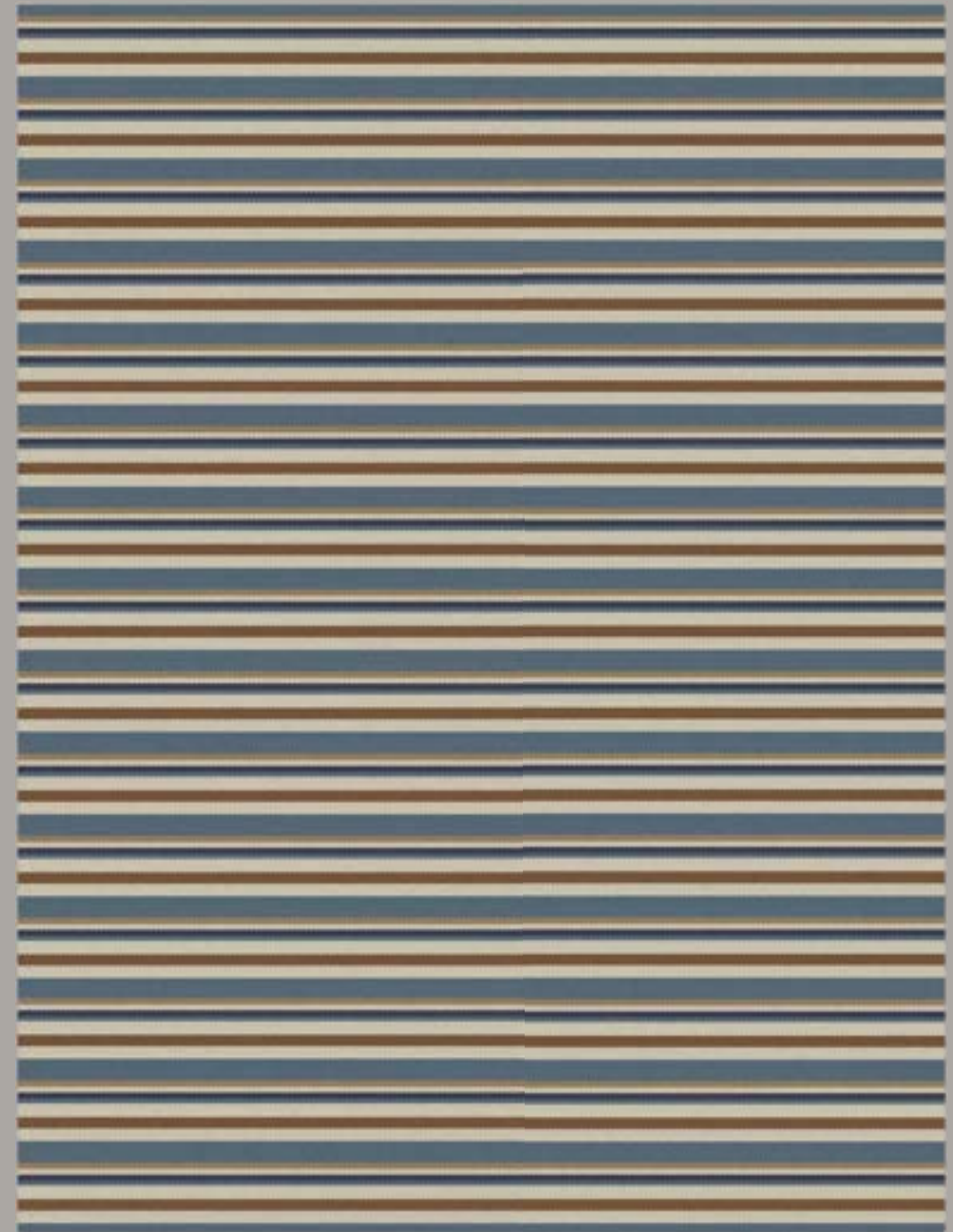
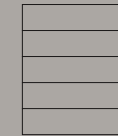


4 | 5

Avon Indigo
Ref: 7002-LT4-4

Approx 240cm wide x 305cm long / 8' x 10'
Taped on 4 sides using narrow linen tape, colour Midnight
Reversible

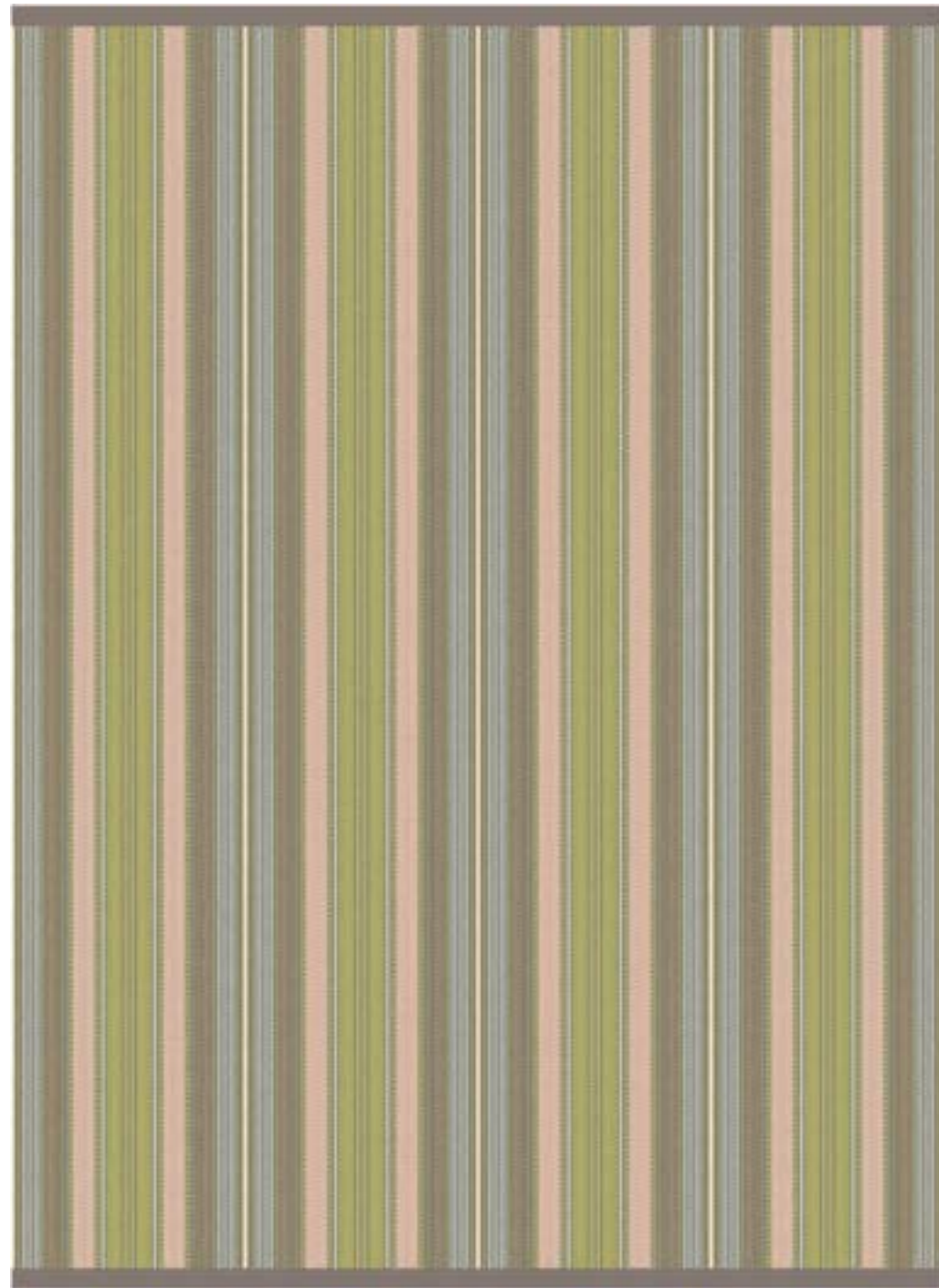
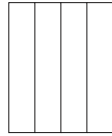
*Other colourways: Lichen and Olive
Alternative sizes available - please see website*



Chartres Marine
Ref: 3202-FS2-5

Approx 350cm wide x 275cm long / 11'6" x 9'
False selvedge on 2 sides

Alternative sizes available - please see website



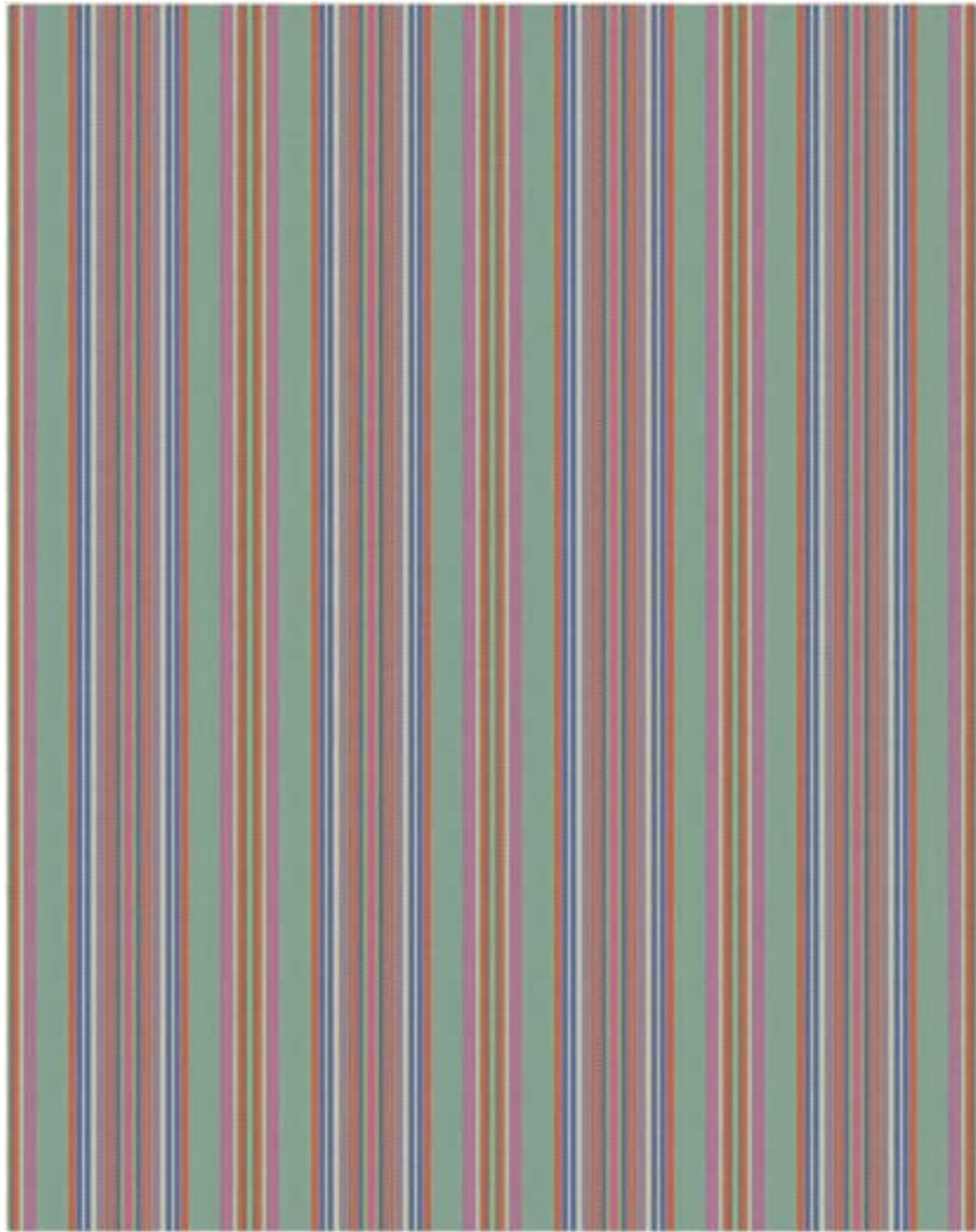
Charleston Catkin
Ref: 9301-LT2-4

Approx 272cm wide x 365cm long / 9' x 12'
Taped on 2 ends using wide linen tape, colour Pebble
Reversible

*Other colourways: Fossil and Turkey Red
Alternative sizes available - please see website*



Charleston
Fossil



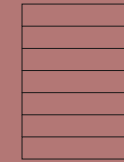
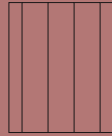
Chatham Azure
Ref: 1307-FS2-4

Approx 280cm wide x 365cm long / 9' x 12'
False selvedge on 2 ends

*Other colourways: Mallow, Multi and Turkey Red
Alternative sizes available - please see website*

Chatham Multi





Dart Crimson
Ref: 7101-LT4-4

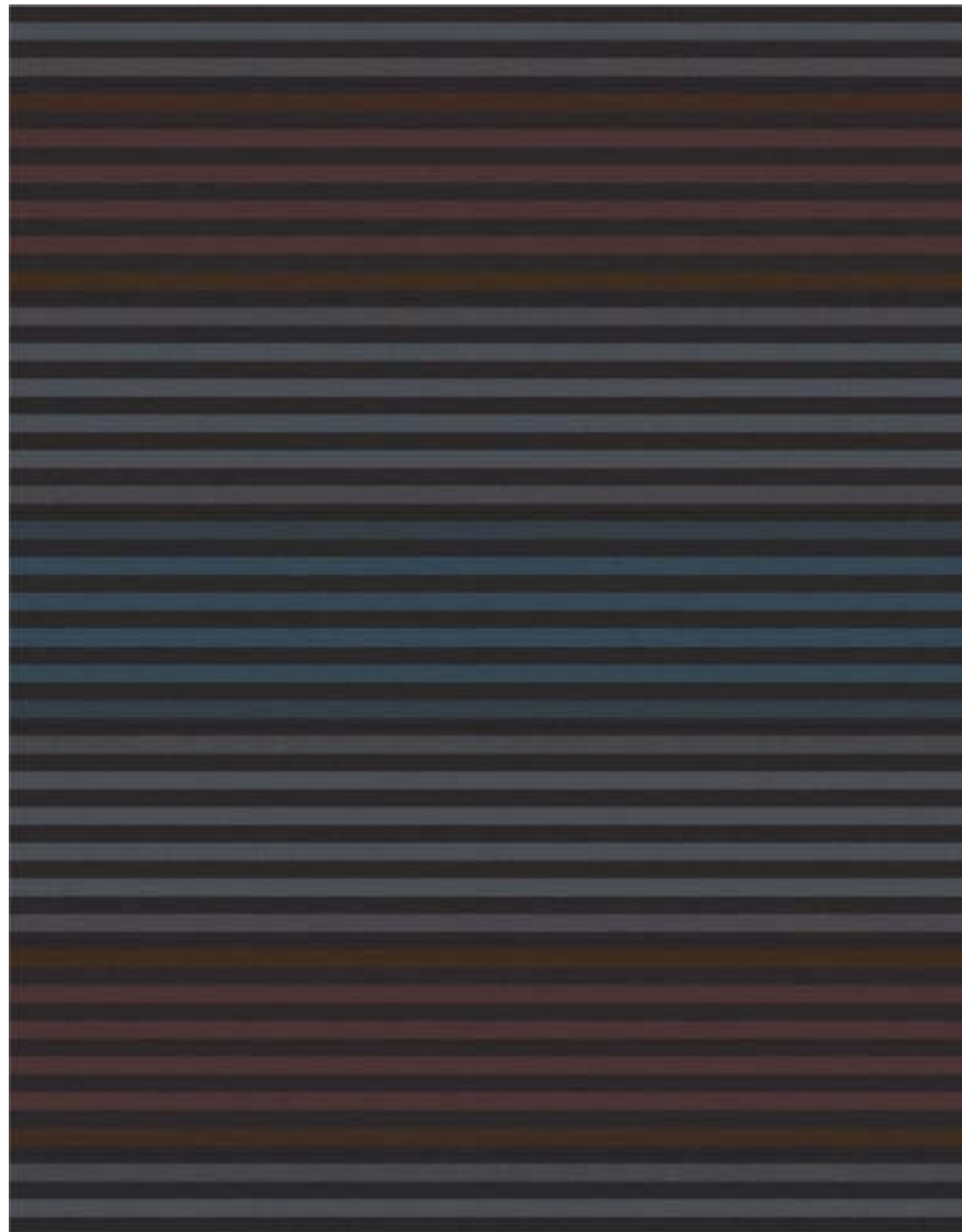
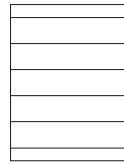
Approx 244cm wide x 305cm long / 8' x 10'
Taped on 4 sides using narrow linen tape, colour Light Red
Reversible

*Other colourways: Midnight, Otter, Persimmon and Pigeon
Alternative sizes available - please see website*

Dart Ground Otter
Ref: 7109-FS2-7

Approx 427cm wide x 305cm long / 14' x 10'
False selvedge on 2 sides

*Other colourways: Crimson, Midnight, Persimmon and Pigeon
Alternative sizes available - please see website*



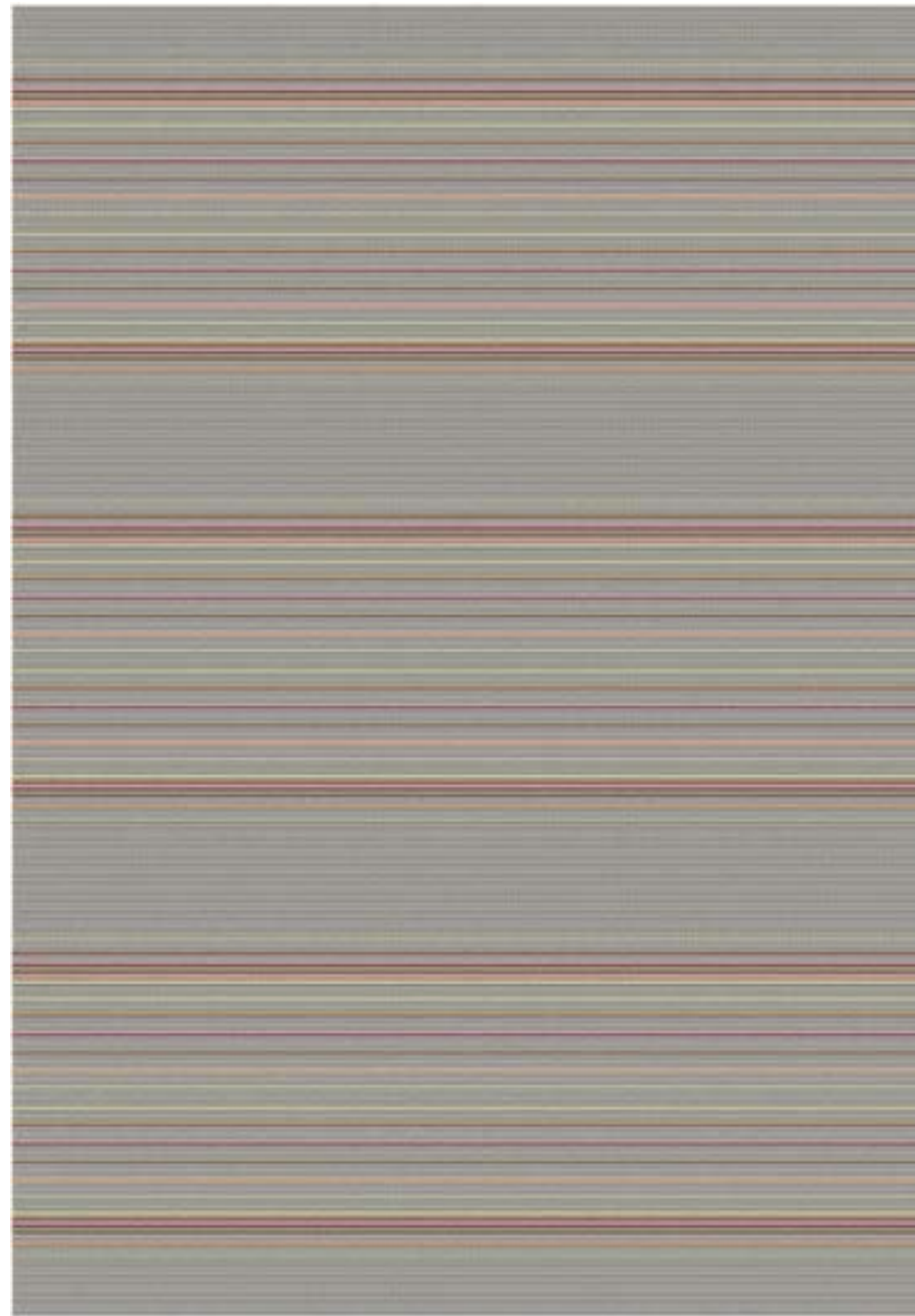
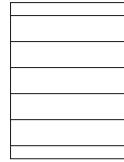
Eldon Airforce, Chestnut & Grey
Ref: 89MX-FS4-6

Approx 360cm wide x 270cm long / 12' x 9'
False Selvedge on 4 sides

*Create individual rugs by combining colourways.
Alternative sizes available - please see website*

Eldon Airforce, Chestnut & Grey





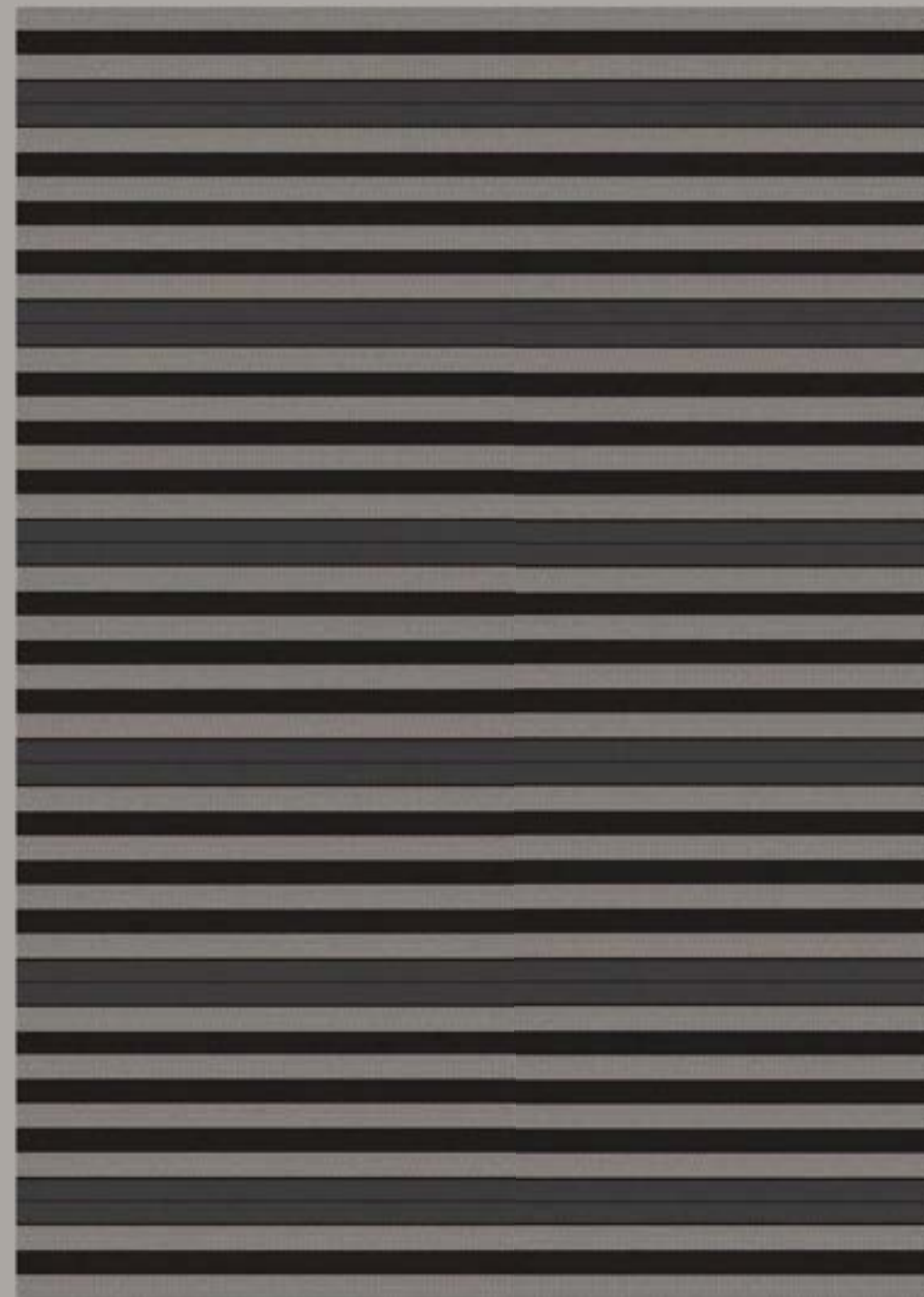
Hayward & Fairfax Prism
Ref: 8382MX-FS4-6

Approx 420cm wide x 305cm long / 14' x 10'
False Selvedge on 4 sides

*Create individual rugs by combining coordinating colours of different designs.
Other colourways: Garnet and Prussian Blue
Alternative sizes available - please see website*

Fairfax Prism

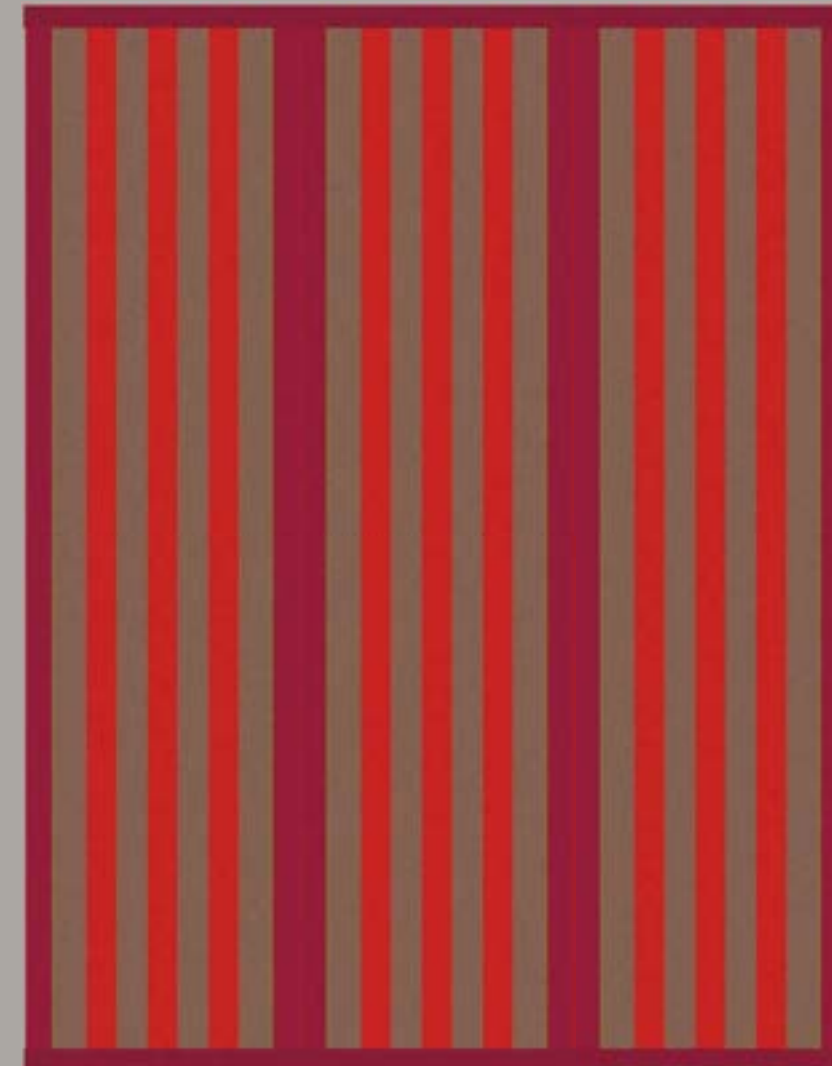




Fitzroy Black
Ref: 7304-FS4-6

Approx 410cm wide x 300cm long / 14' x 10'
False selvedge on 4 sides

*Other colourways: Bright, Midnight and Rosebriar
Alternative sizes available - please see website*



Fitzroy Bright
Ref: 7301-LT2-3

Approx 210cm wide x 280cm long / 6'10" x 9'2"
Taped on 2 ends using wide linen tape, colour Light Red
Reversible

*Other colourways: Black, Midnight and Rosebriar
Alternative sizes available - please see website*



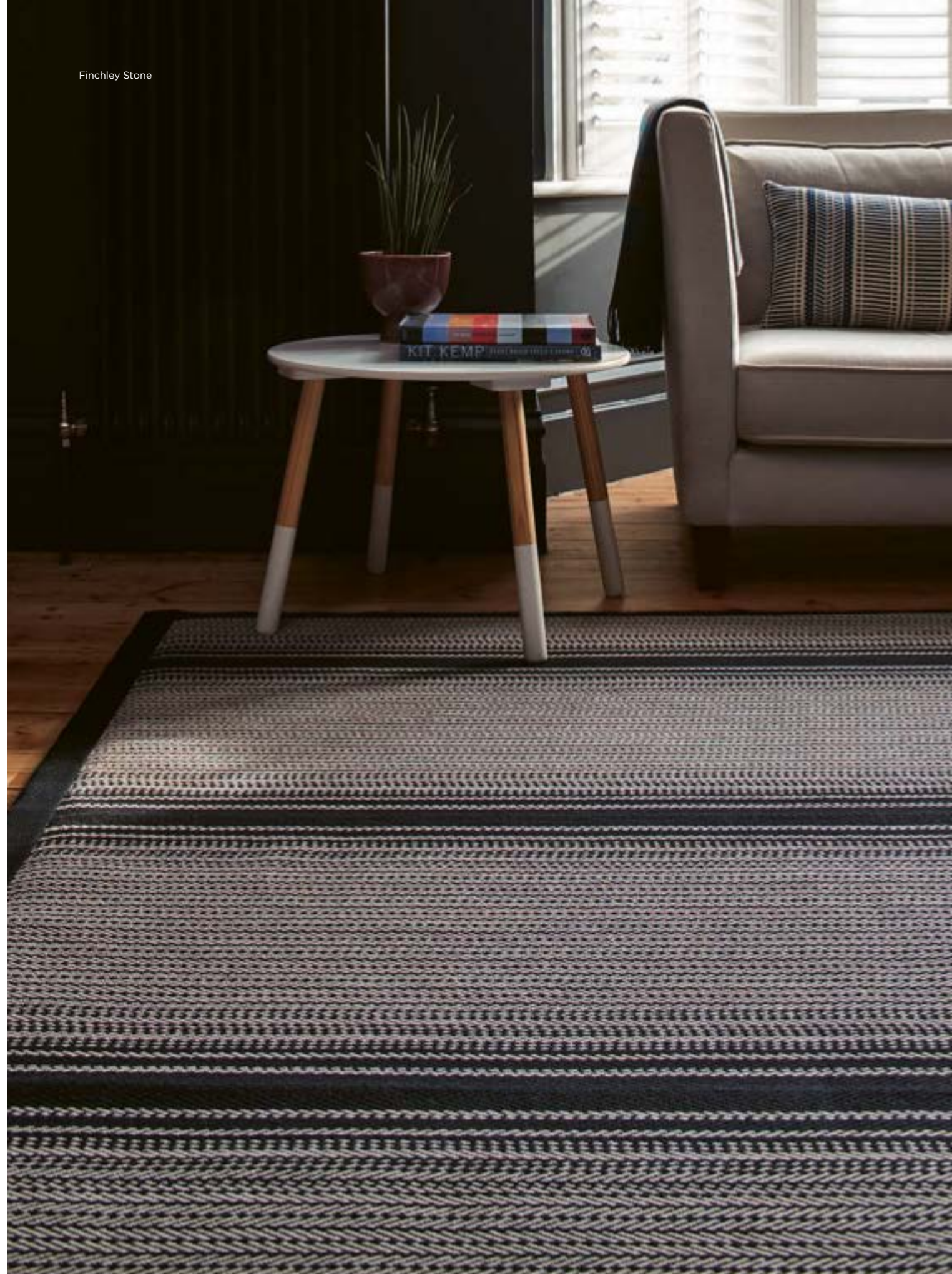


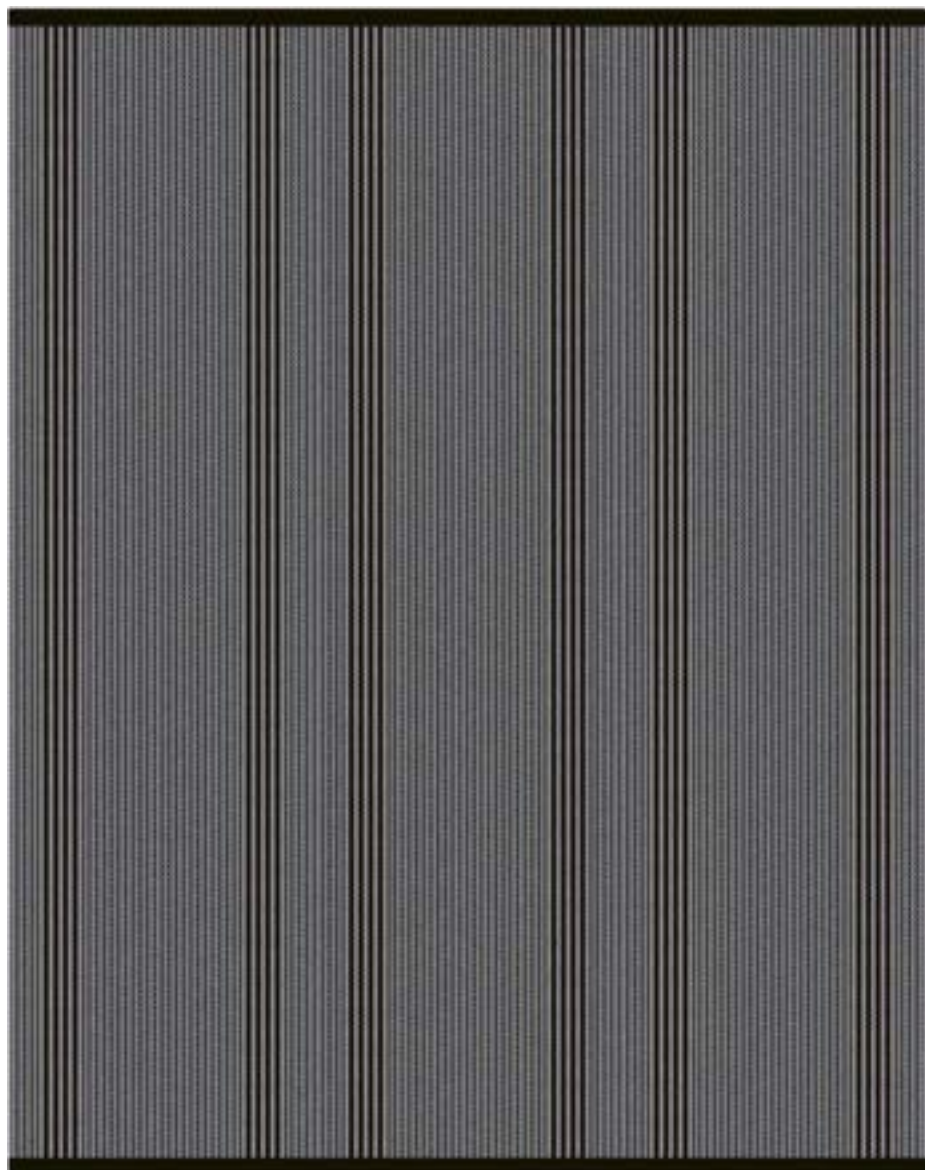
Finchley Stone
Ref: 8801-LT4-4

Approx 240cm wide x 305cm long / 8' x 10'
Taped on 4 sides using wide linen tape, colour Black
Reversible

Alternative sizes available - please see website

Finchley Stone





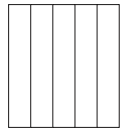
Flaxman Stone
Ref: 7602-LT2-3

Approx 180cm wide x 245cm long / 6' x 8'
Taped on 2 ends using narrow linen tape, colour Black
Reversible

*Other colourways: Lichen, Pewter, Quartz and Ruby
Alternative sizes available - please see website*



Flaxman Stone



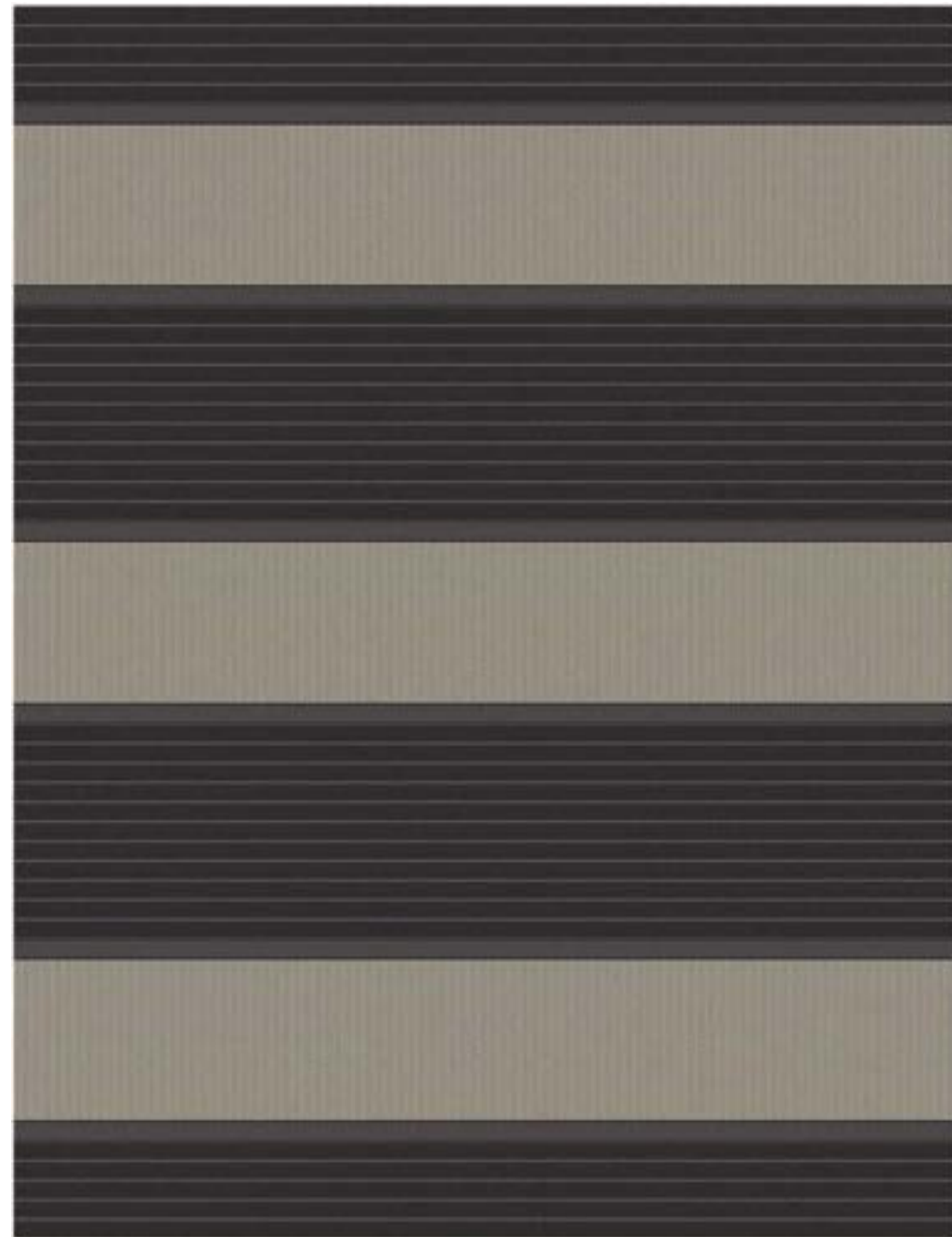
Franklin Copper
Ref: 7204-LT2-5

Approx 305cm wide x 426cm long / 10' x 14'
Taped on 2 ends using wide linen tape, colour Rust
Reversible

*Other colourways: Carmine, Dark Violet and Indigo
Alternative sizes available - please see website*

Franklin Indigo



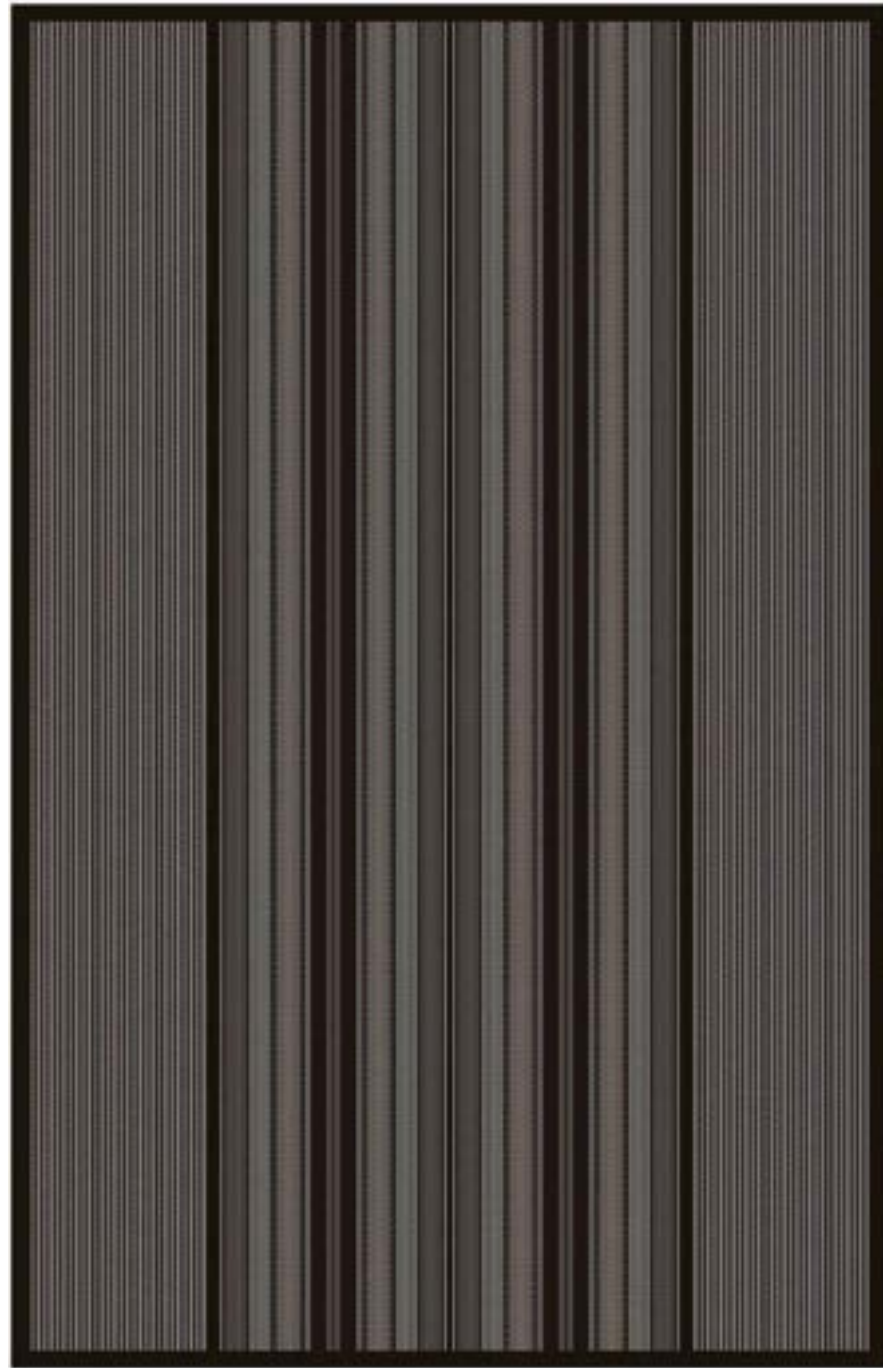
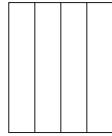


Halle Soft Black & Hanover Oatmeal
Ref: 5554MX-FS4-6

Approx 380cm wide x 305cm long / 12'6" x 10'
False selvedge on 4 sides

*Create individual rugs by mixing designs and colourways.
Other colourways: Halle - Elephant, Hanover - Elephant and Soft Black
Alternative sizes available - please see website*

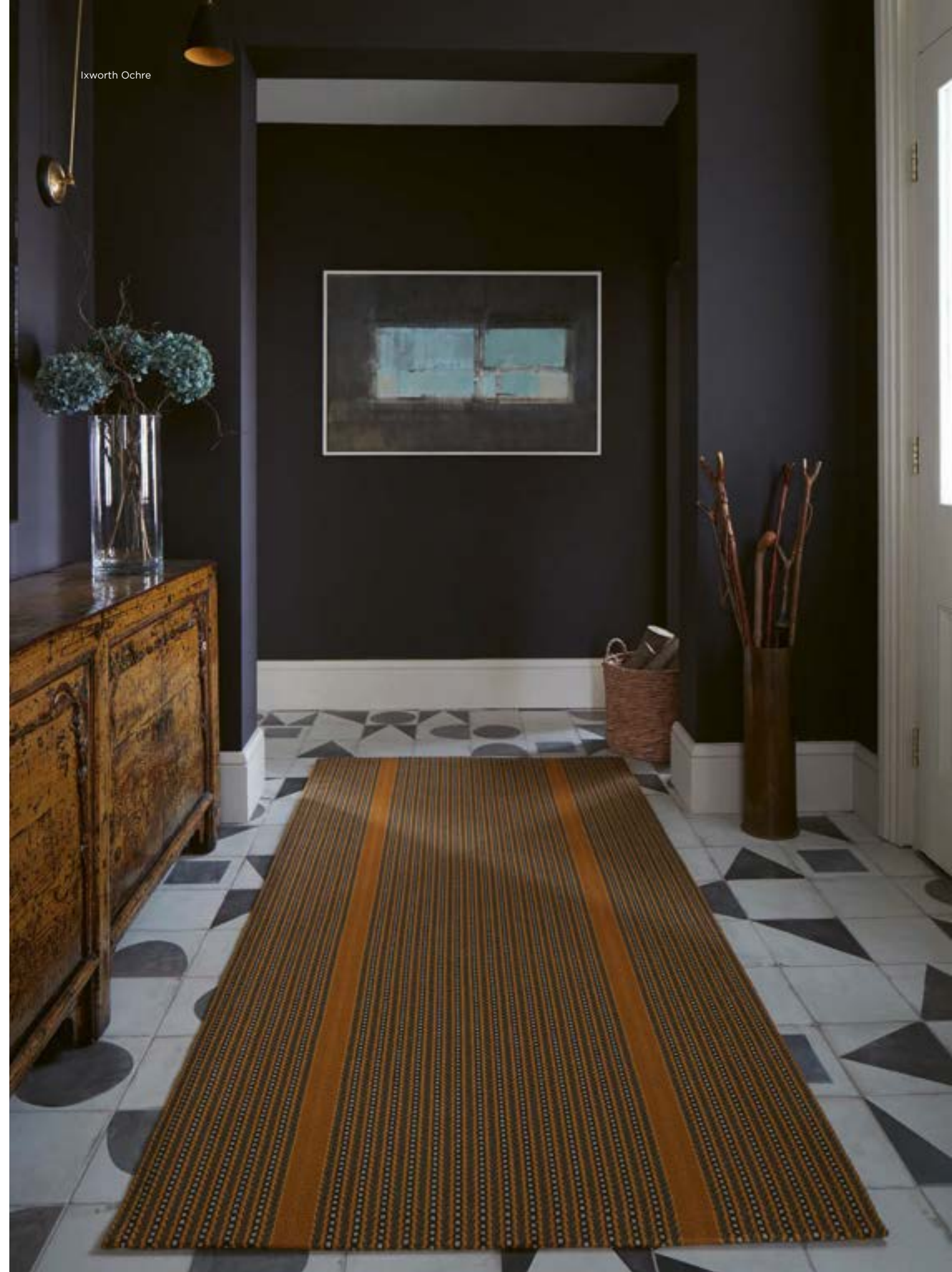




Ixworth Lamp Black & Charleston Fossil
Ref: 9493MX-LT4-4

Approx 258cm wide x 396cm long / 8'6" x 13'
Taped on 4 sides using narrow linen tape, colour Black
Reversible

*Create individual rugs by combining coordinating colours of different designs.
Other colourways: Ixworth - Ochre. Charleston - Catkin and Turkey Red
Alternative sizes available - please see website*



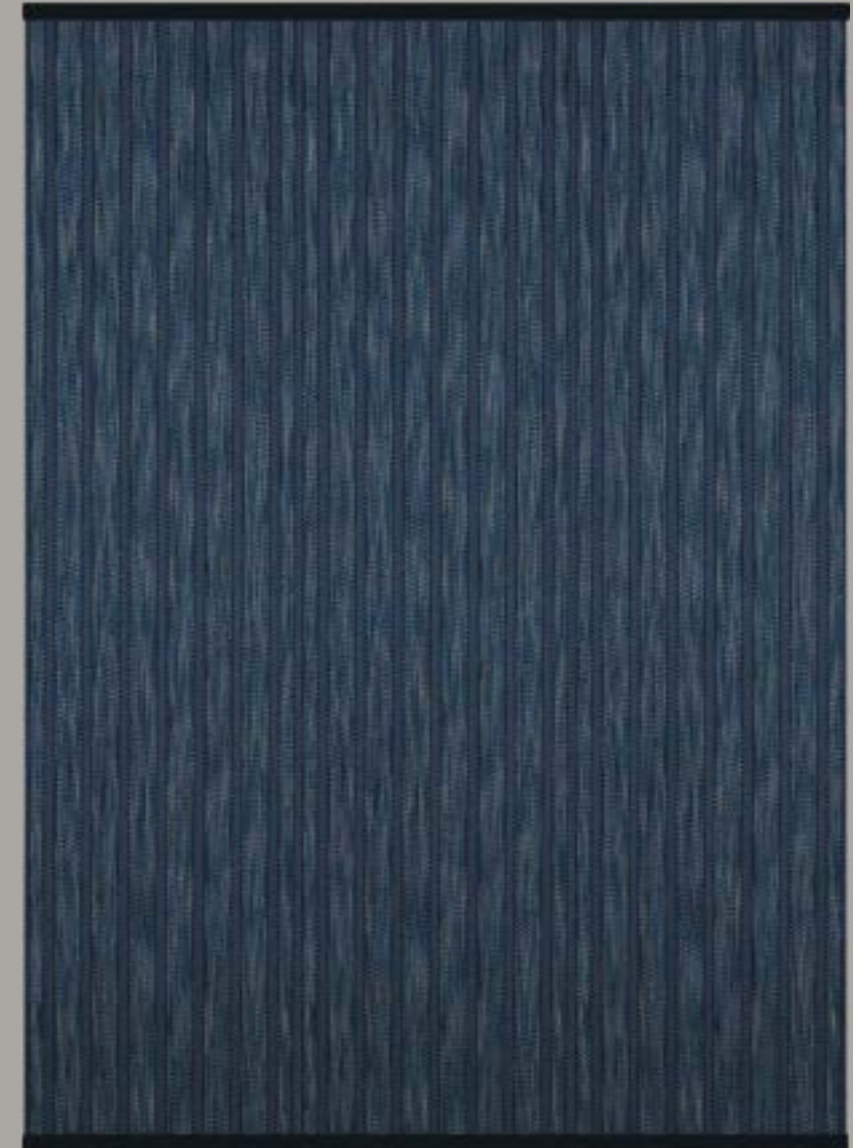
Ixworth Ochre



Kasuri Cherry
Ref: 7901-FS2-5

Approx 305cm wide x 250cm long / 10' x 8'
False selvedge on 2 sides

Other colourways: Indigo and Onyx
Alternative sizes available - please see website



Kasuri Indigo
Ref: 7302-LT2-3

Approx 180cm wide x 248cm long / 6' x 8'
Taped on 2 ends using narrow linen tape, colour Midnight
Reversible

Other colourways: Cherry and Onyx
Alternative sizes available - please see website



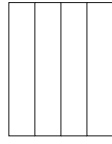
Kobe Lantern
Ref: 8003-LT4-3

Approx 180cm wide x 245cm long / 6' x 8'
Taped on 4 sides using narrow linen tape, colour Turkey Red
Reversible

Other colourways: Blossom, Jade, Mimosa, Plum, Storm and Strata
Alternative sizes available - please see website

Kobe Jade





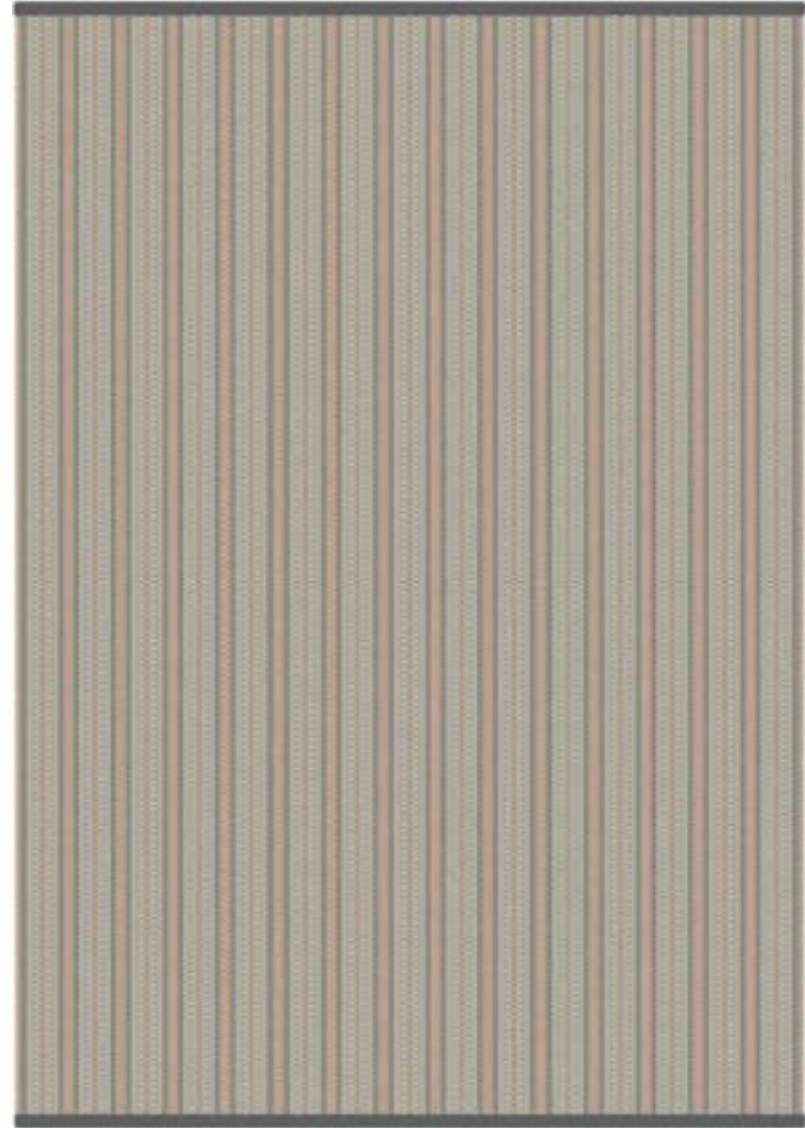
Kyoto Blossom
Ref: 8101-FS2-4

Approx 280cm wide x 365cm long / 9' x 12'
False selvedge on 2 ends

Other colourways: Jade, Lantern and Storm
Alternative sizes available - please see website

Kyoto Lantern

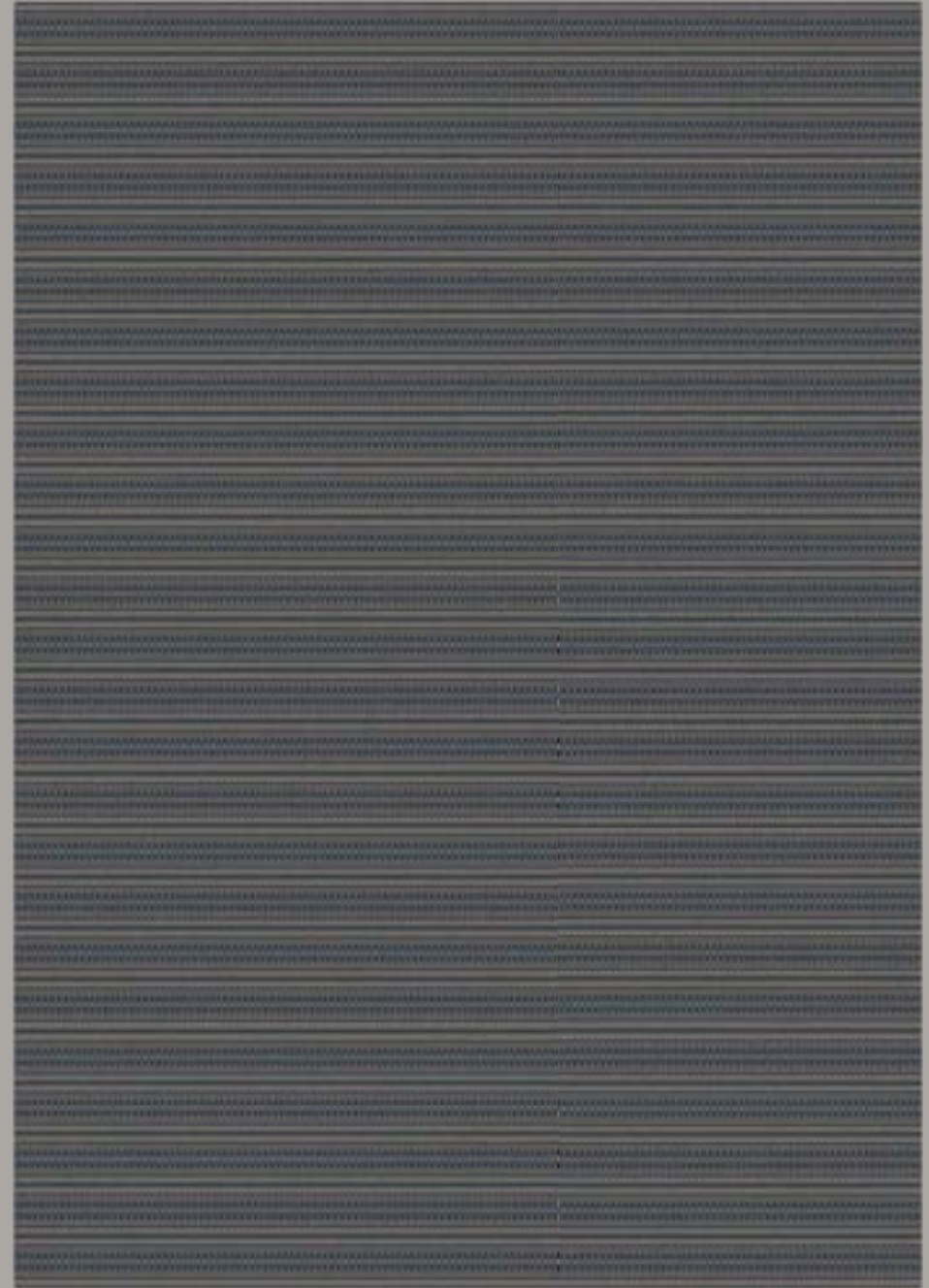




Lennox Clover
Ref: 1102-LT2-3

Approx 210cm wide x 305cm long / 6'8" x 10'
Taped on 2 ends using narrow linen tape, colour Dawn
Reversible

Other colourways: Shark and Steel
Alternative sizes available - please see website

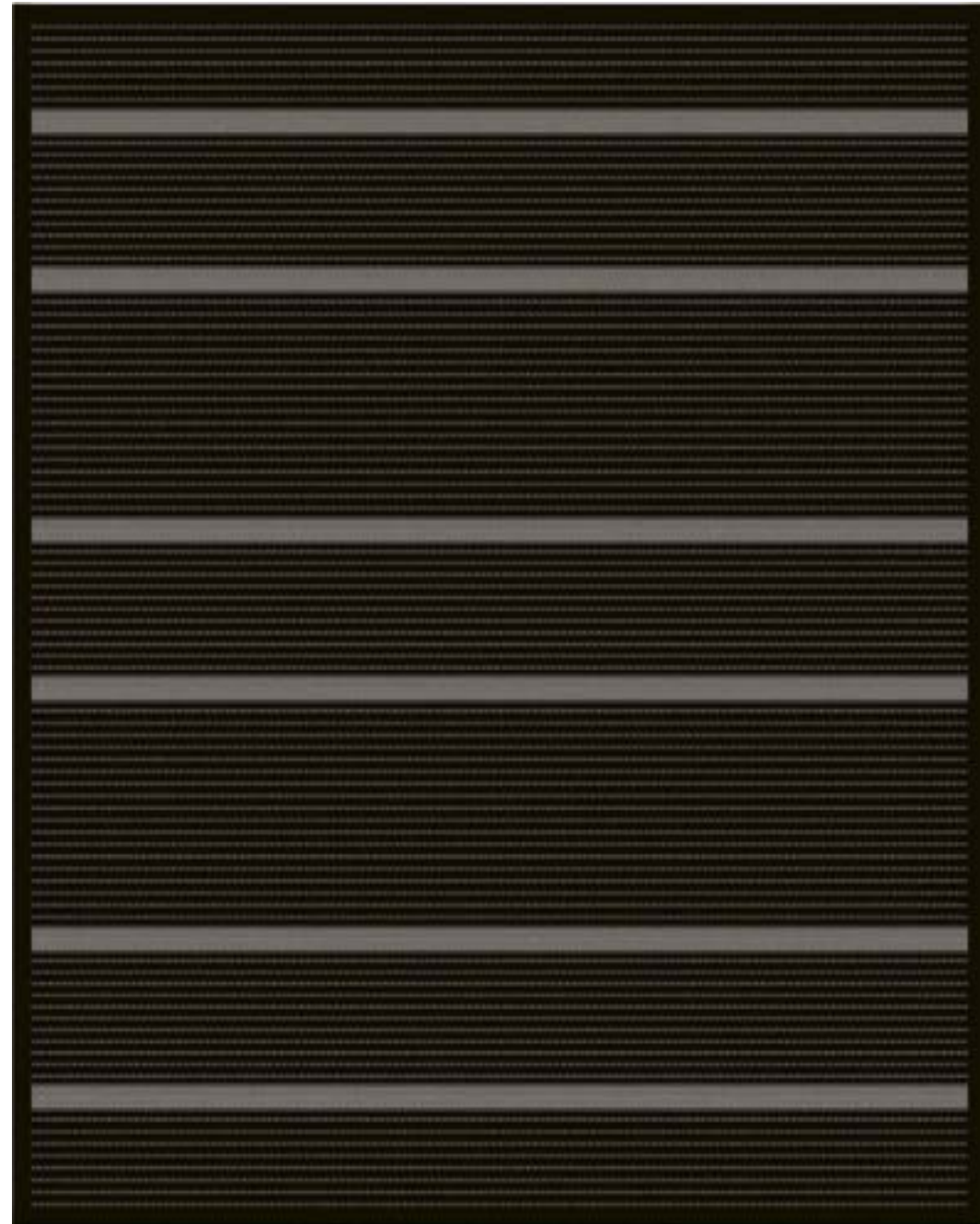


Lennox Steel
Ref: 1104-FS2-5

Approx 350cm wide x 250cm long / 9' x 12'
False selvedge on 2 sides

Other colourways: Clover and Shark
Alternative sizes available - please see website



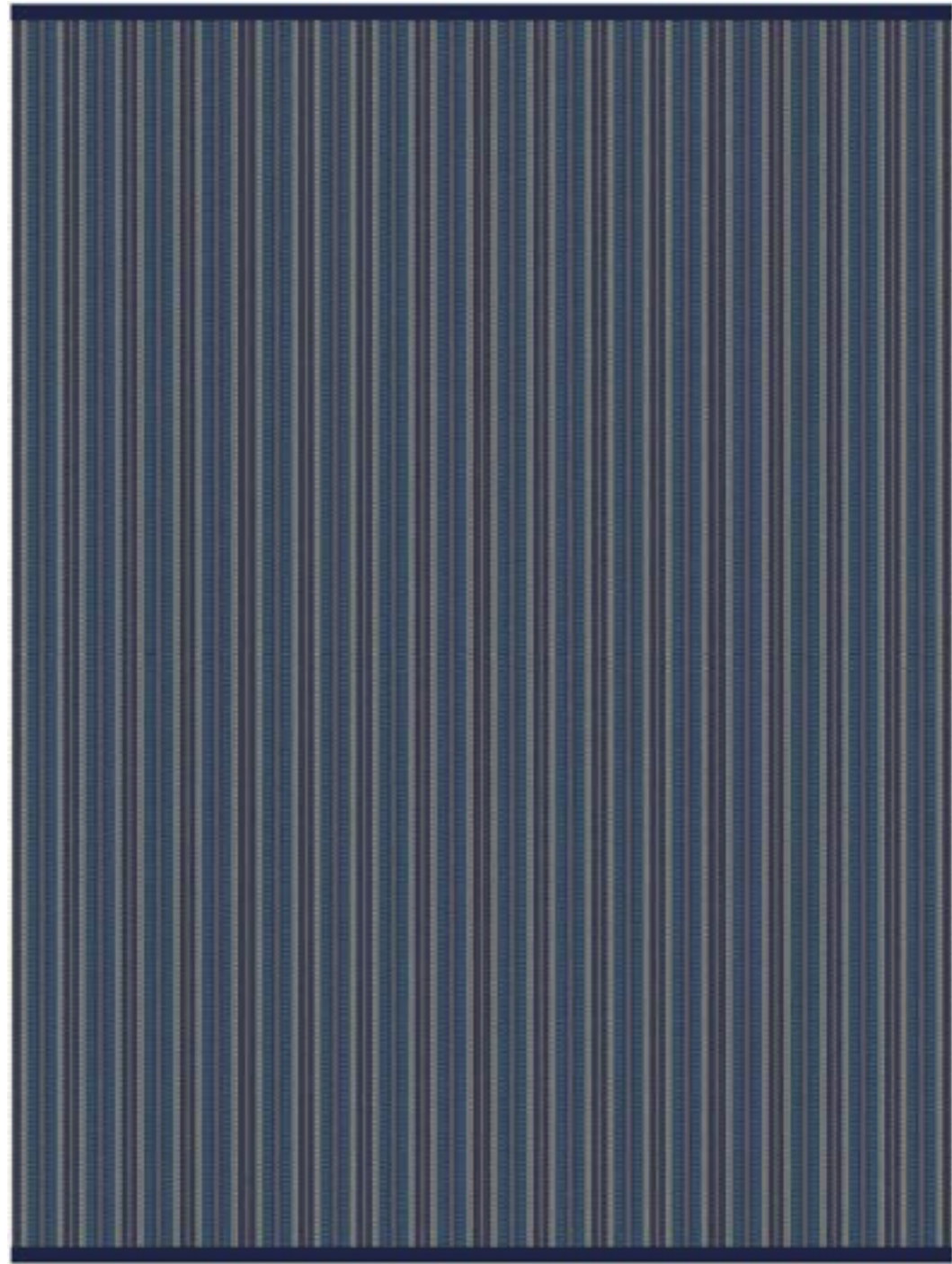


Malton & George Black
Ref: 2724BK-LT4-6

Approx 390cm wide x 305cm long / 12'9" x 10'
Taped on 4 sides using wide linen tape, colour Black
Reversible

*Create individual rugs by combining coordinating colours of different designs.
Other colourways: Malton - Cinder
Alternative sizes available - please see website*





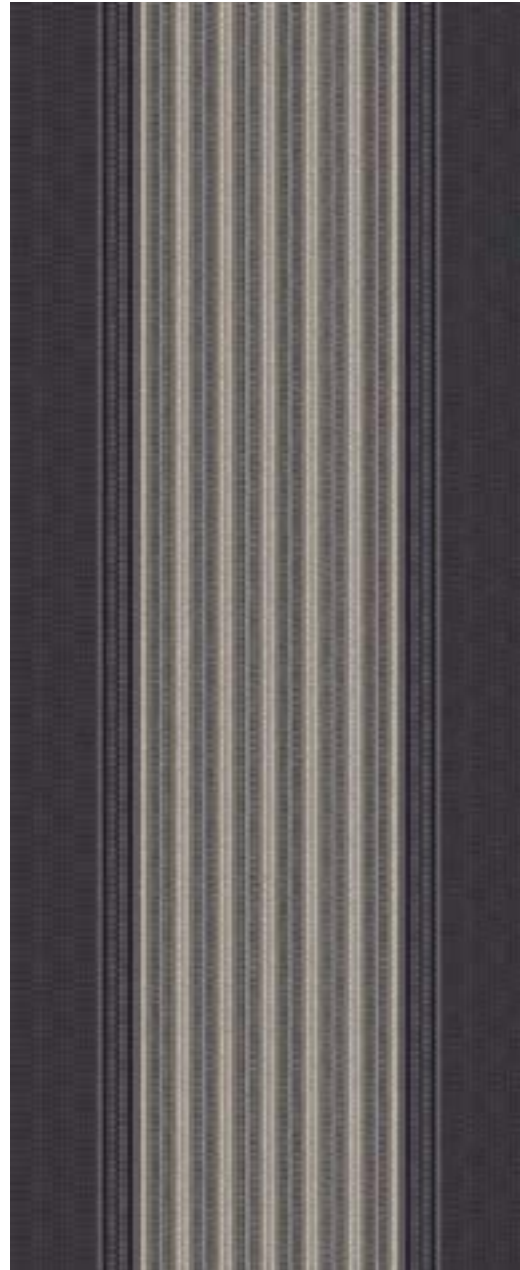
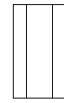
Masai Indigo
Ref: 6604-LT2-4

Approx 276cm wide x 365cm long / 9' x 12'
Taped on 2 ends using narrow linen tape, colour Midnight
Reversible

*Other colourways: Emerald, Madder, Oatmeal, Smoke and Tobacco
Alternative sizes available - please see website*

Masai Madder



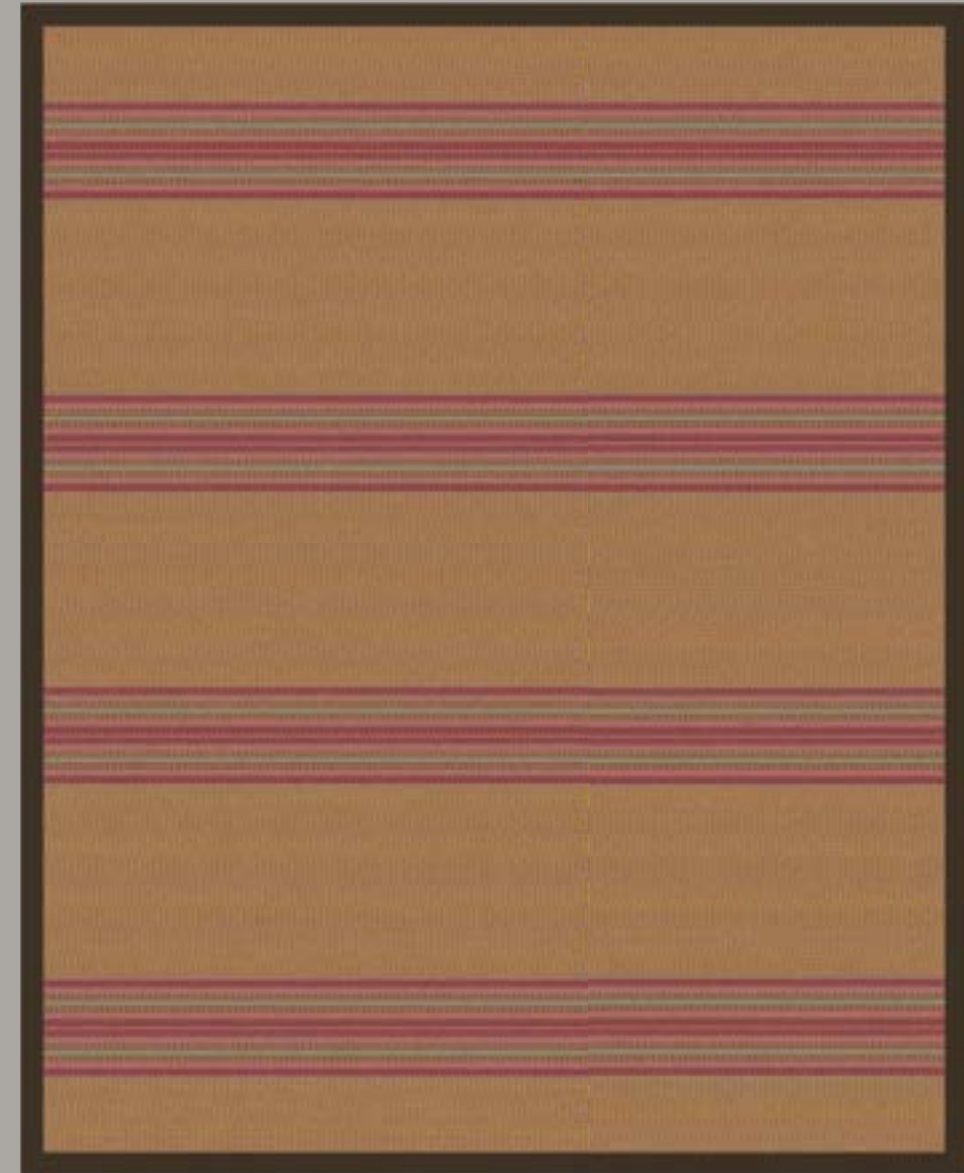


Pelham Slate & Vernon Chalk
Ref: 9084MX-FS4-2

Approx 130cm wide x 365cm long / 4'2" x 12'
False selvedge on 4 sides

Create individual rugs by mixing designs and colourways.

*Other colourways: Pelham - Chalk, Gold, Juniper and Slate. Vernon - Croft Blue, Lichen, Soft Red, Slate and Teal
Alternative sizes available - please see website*



Pelham Gold
Ref: 9003-LT4-4

Approx 280cm wide x 250cm long / 9'2" x 8'2"
Taped on 4 sides using wide linen tape, colour Walnut
Reversible

*Other colourways: Chalk, Juniper and Slate
Alternative sizes available - please see website*



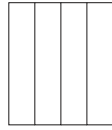
Swanson Juniper
Ref: 6205-LT4-7

Approx 467cm wide x 360cm long / 15' 4" x 12'
Taped on 4 sides using wide linen tape, colour Shetland Grey
Reversible

*Other colourways: Celadon, Cranberry and Pebble
Alternative sizes available - please see website*

Swanson
Celadon

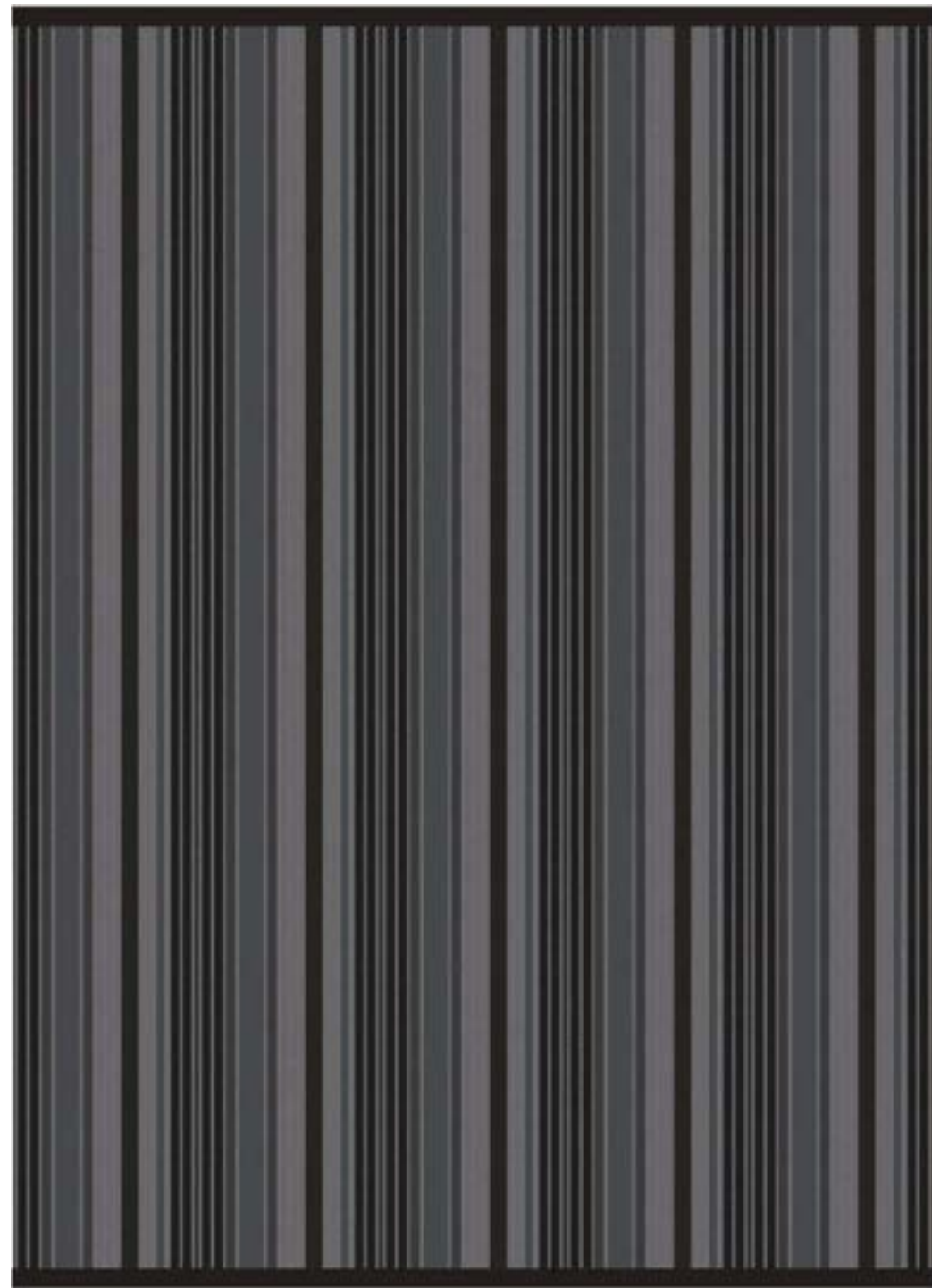
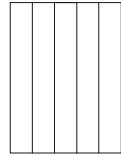




Switch Fraise
Ref: 8601-FS2-4
Approx 244cm wide x 305cm long / 8' x 10'
False selvedge on 2 ends
Other colourways: French Grey
Alternative sizes available - please see website



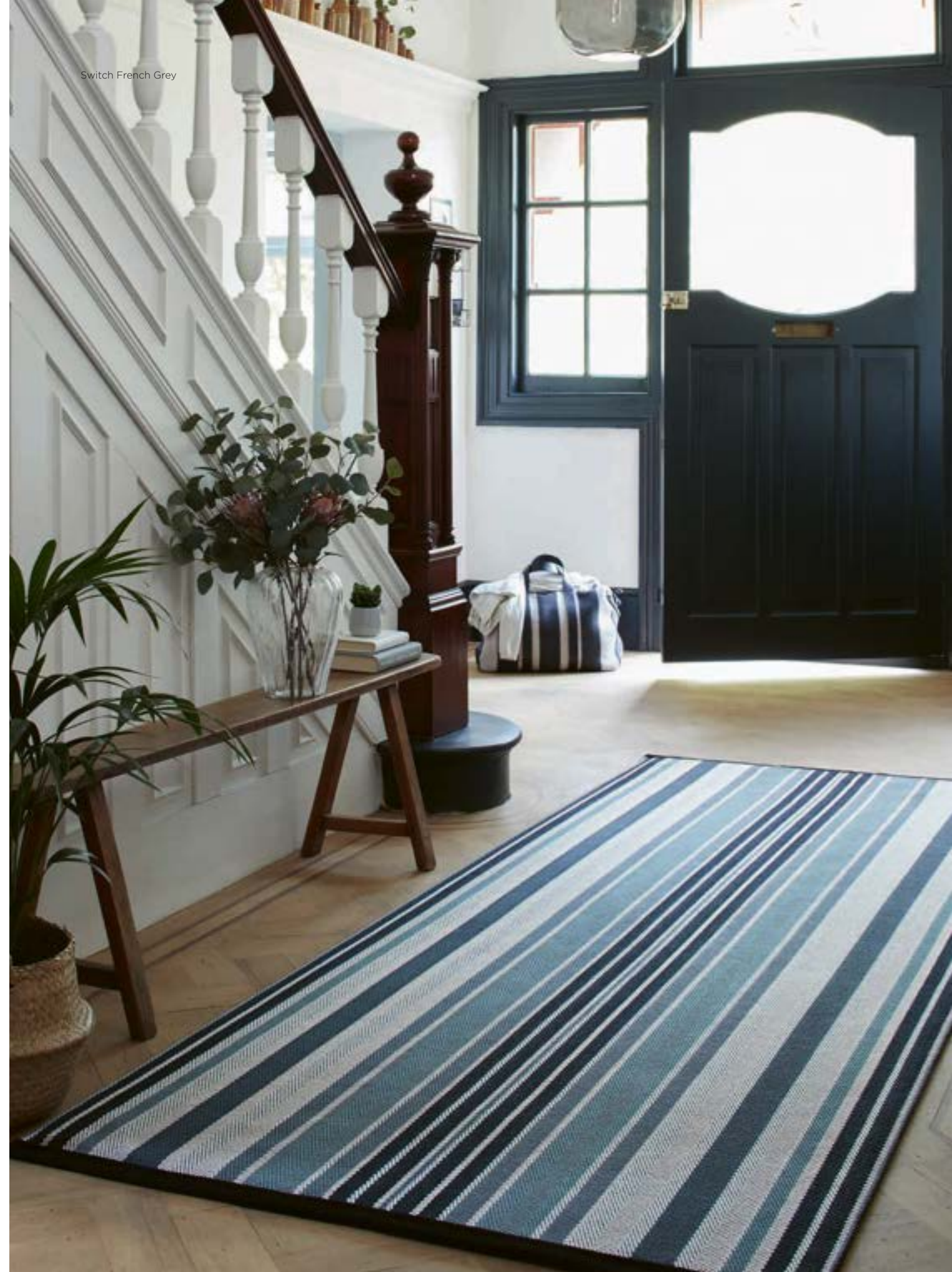
Switch Fraise



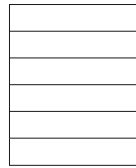
Switch French Grey
Ref: 8602-LT2-5

Approx 305cm wide x 426cm long / 10' x 14'
Taped on 2 ends using wide linen tape, colour Black
Reversible

Other colourways: Fraise
Alternative sizes available - please see website



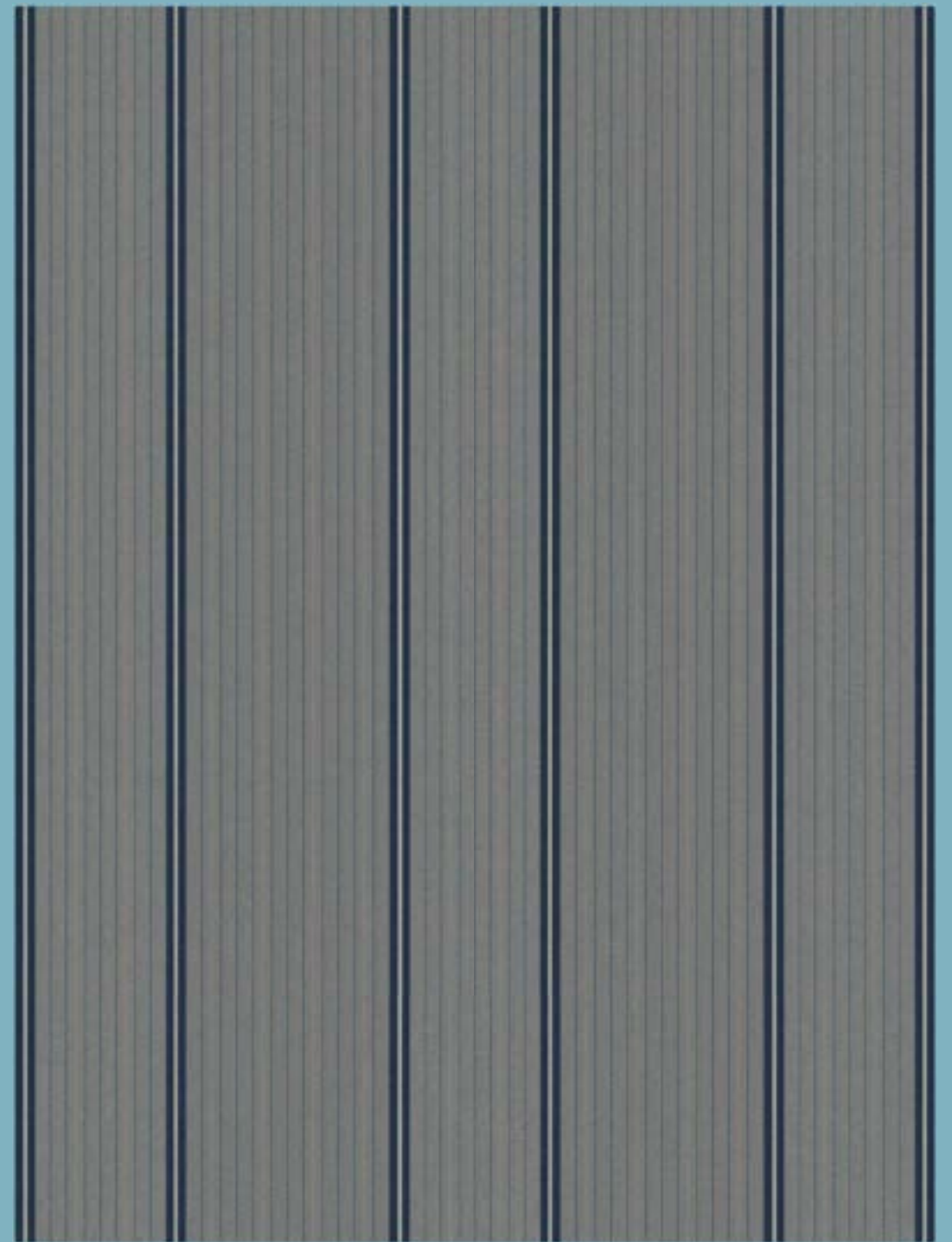
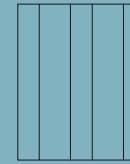
Switch French Grey



Trent Shale
Ref: 2910-LT2-6

Approx 348cm wide x 274cm long / 11' 5" x 9'
Taped on 2 sides using wide linen tape, colour Chestnut
Reversible

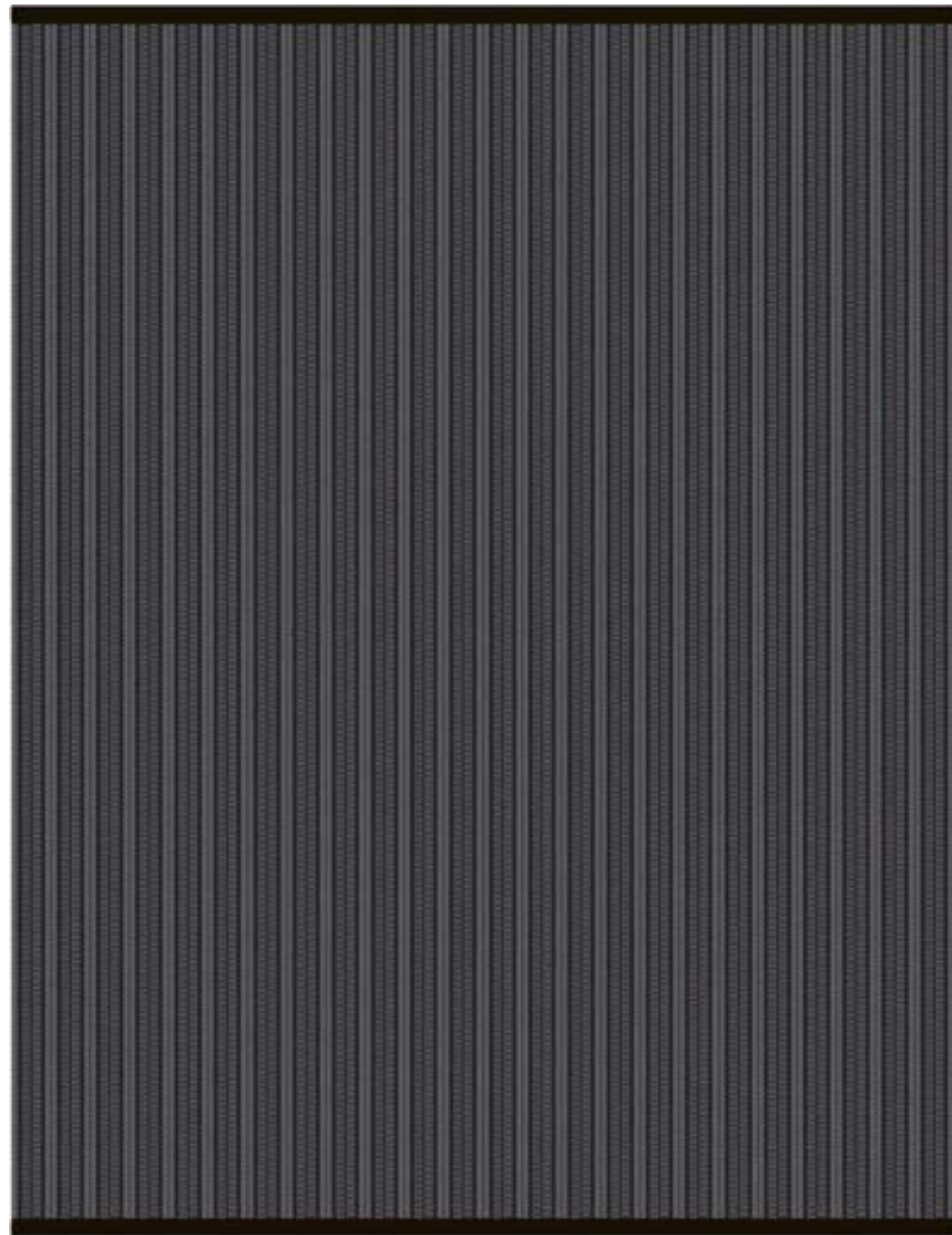
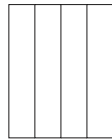
*Other colourways: Airforce, Beaver, Elm, Raspberry and Silver
Alternative sizes available - please see website*



Trent & Ashby, Airforce
Ref: 2917AF-FS2-5

Approx 314cm wide x 426cm long / 10' 3" x 14'
False Selvedge on 2 ends

*Create individual rugs by combining coordinating colours of different designs.
Other colourways: Beaver, Elm, Raspberry, Shale and Silver
Alternative sizes available - please see website*



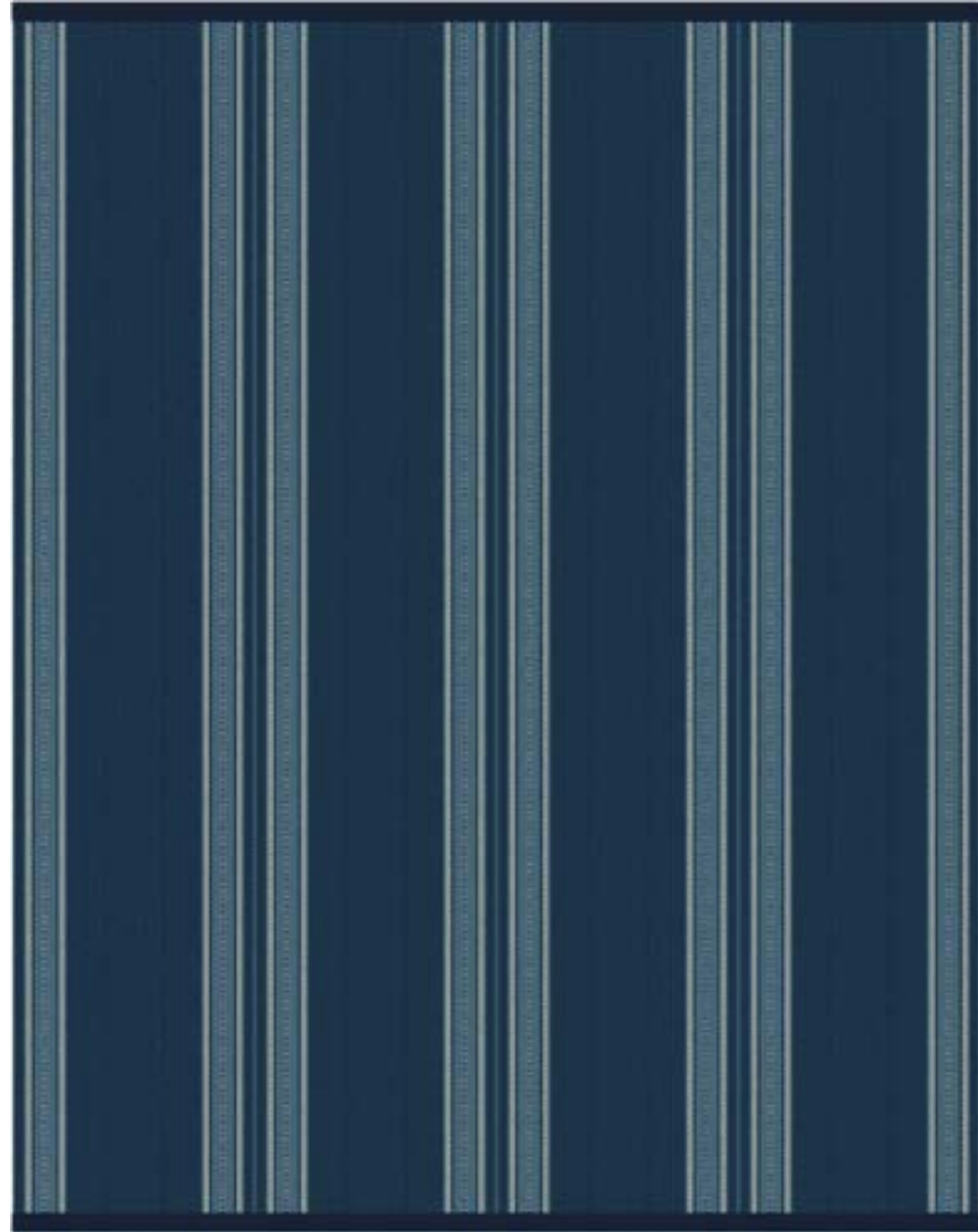
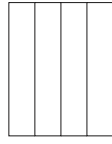
Vernon Slate
Ref: 8404-LT2-4

Approx 280cm wide x 365cm long / 9' x 12'
Taped on 2 ends using wide linen tape, colour Black
Reversible

*Other colourways: Chalk, Croft Blue, Lichen, Soft Red and Teal
Alternative sizes available - please see website*

Vernon Teal



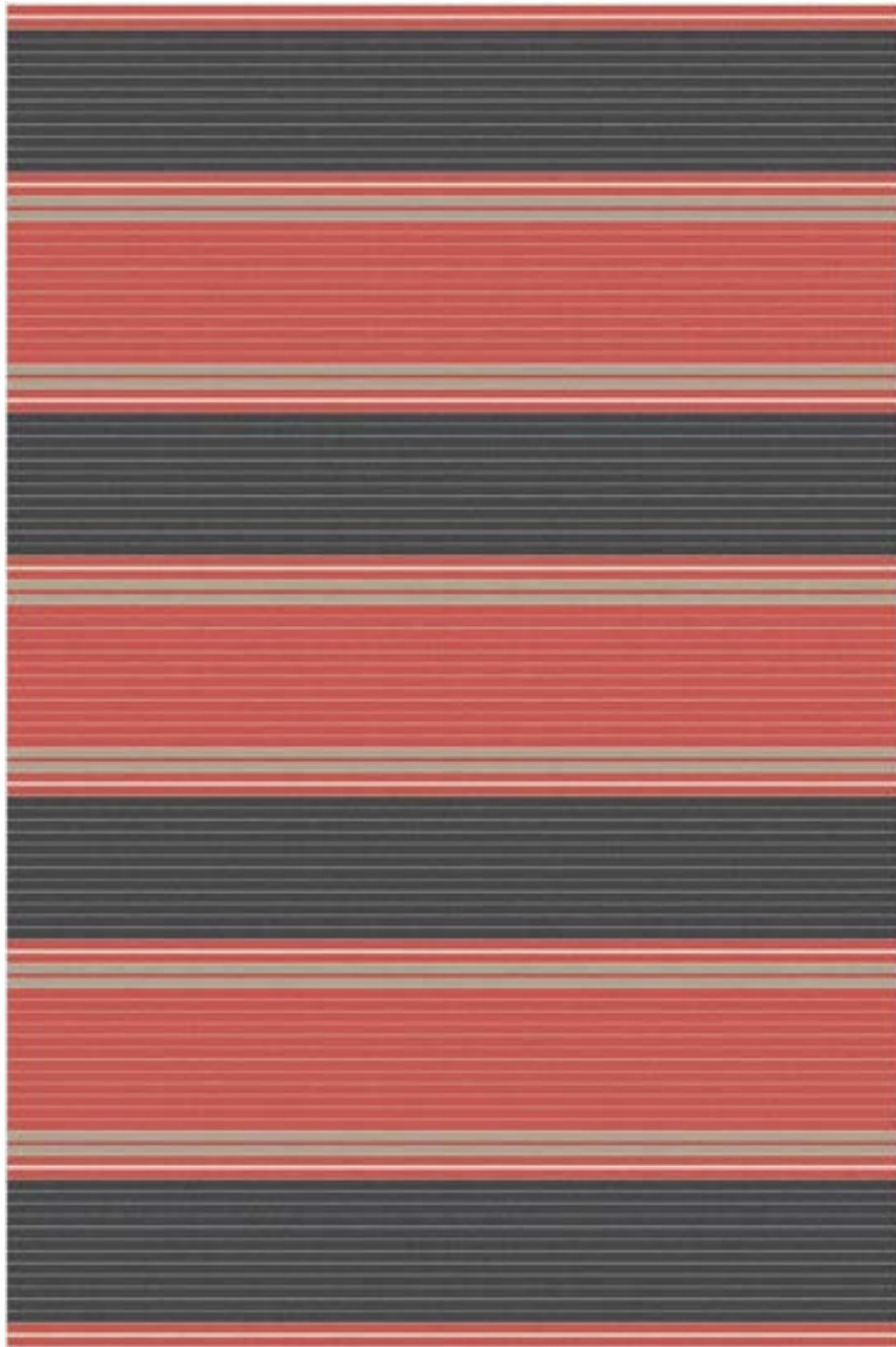


Westport Indigo
Ref: 7801-LT2-4
Approx 280cm wide x 365cm long / 9' x 12'
Taped on 2 ends using wide linen tape, colour Midnight
Reversible

*Other colourways: Damson, Lichen, Rust and Sapphire
Alternative sizes available - please see website*

Westport Lichen





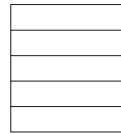
Whitman Soft Black & Light Red
Ref: 7777MX-FS2-7

Approx 434cm wide x 305cm long / 14'2" x 10'
False Selvedge on 2 sides

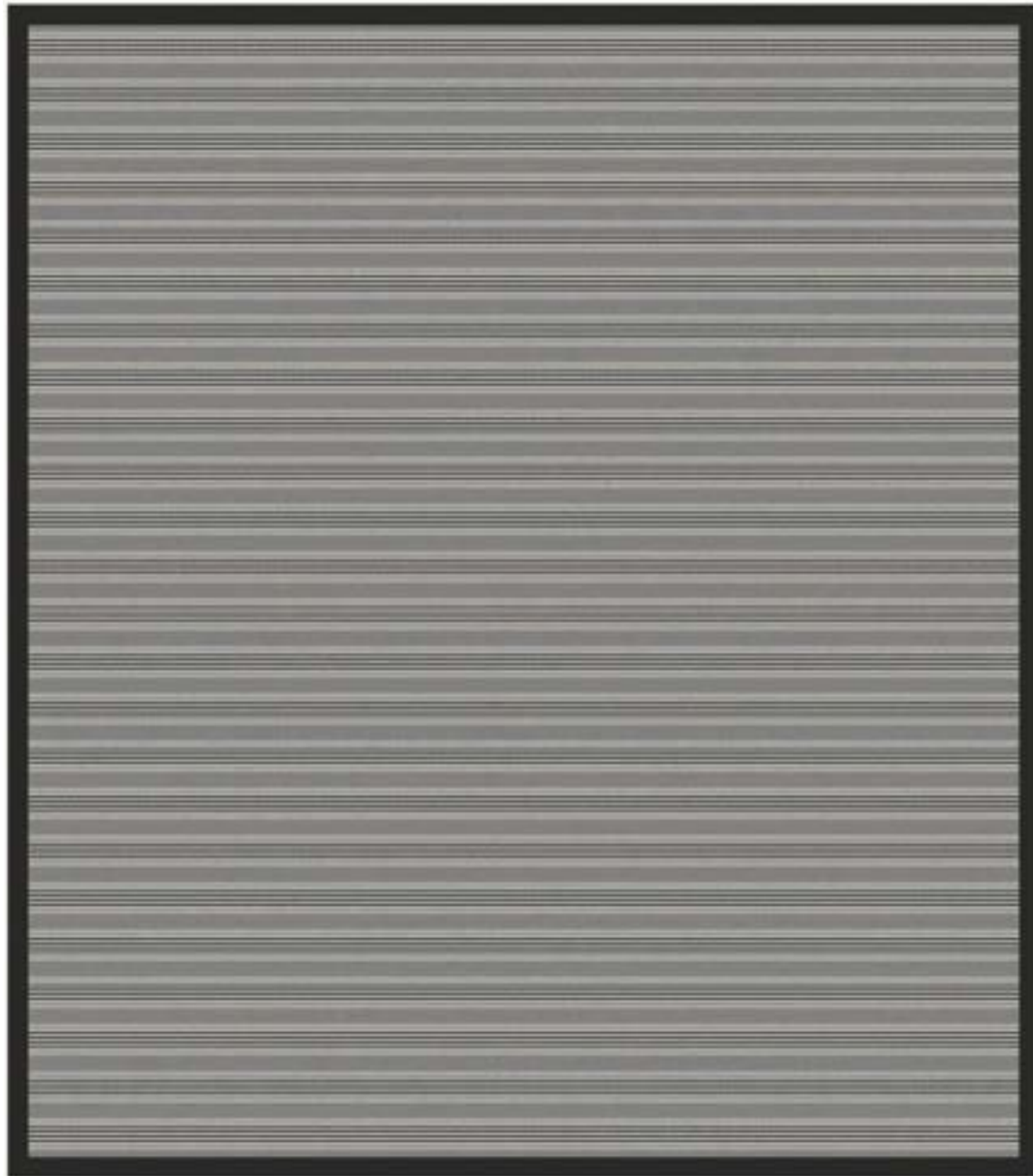
*Create individual rugs by mixing colourways.
Other colourways: Birch and Bright Rose
Alternative sizes available - please see website*

Whitman Soft Black & Light Red





Shetland Broadcloth Russet



Shetland Sudbury Light Grey
Ref: 6323-LT4-5

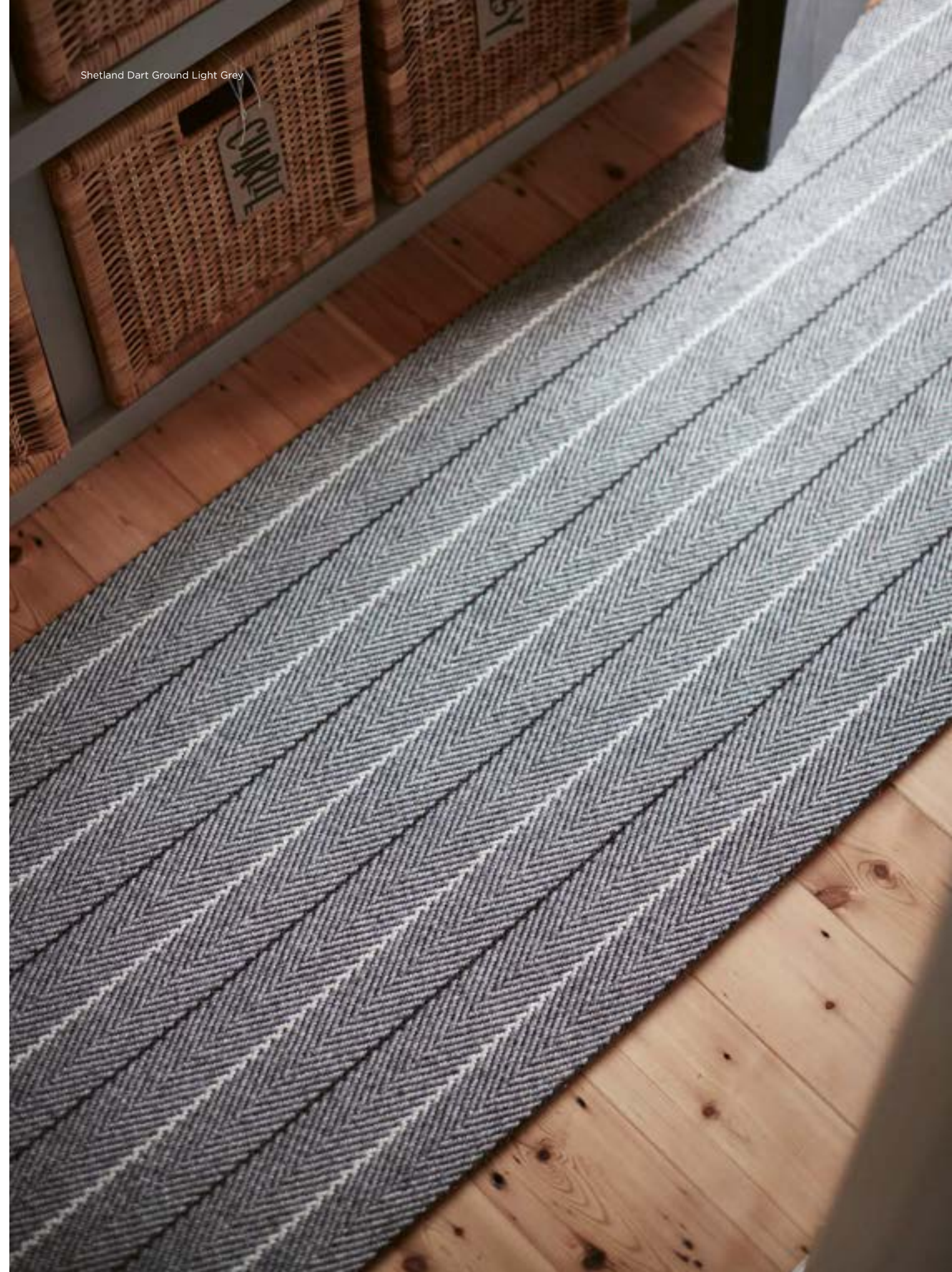
Approx 344cm wide x 310cm long / 11' 4" x 10' 2"
Taped on 4 sides using wide linen tape, colour Shetland Grey
Reversible

*Other colourways: Moorit
Alternative sizes available - please see website*





Shetland Dart Ground Light Grey



Shetland Swanson Light Grey
Ref: 8002-FS2-6

Approx 360cm wide x 305cm long / 11'9" x 10'
False selvedge on 2 sides

Alternative sizes available - please see website

rug finishes



64 | 65

linen tape



The finish on a rug will alter the style and impression it gives to a space. Linen tape, available in two widths and a number of complementary tones, adds a smart framed finish. A simple turned under false selvedge gives a rug or runner a refined, contemporary look.

1 Kobe Jade with natural woven edges finished with a narrow linen tape (76mm / 3")

The natural woven edge of our flatweave is the perfect finish on the long side of a rug or runner. When embracing the natural woven edges of the Flatweave, it is only necessary to finish the two ends.

2 Ashby Shale finished on all four sides with a wide linen tape (120mm / 4")

Hand sewn at our Herefordshire workshop, rugs and runners finished with a linen tape have the added practicability of being reversible.

3 Shetland Sudbury Light Grey with natural woven edges finished with false selvedge ends

A false selvedge is turned under to achieve a clean and contemporary finish. This can be used to finish the ends or all four sides of a rug or runner.

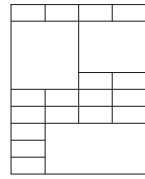
TAPIS D'AVIGNON

Offset Block Grey
Ref: T18103-12-1
Approx 270cm wide x 315cm long / 8'10" x 10'4"



Checkerboard Raspberry
Ref: T17041-18-4
Approx 210cm wide
x 315cm long /
6'10" x 10'4"

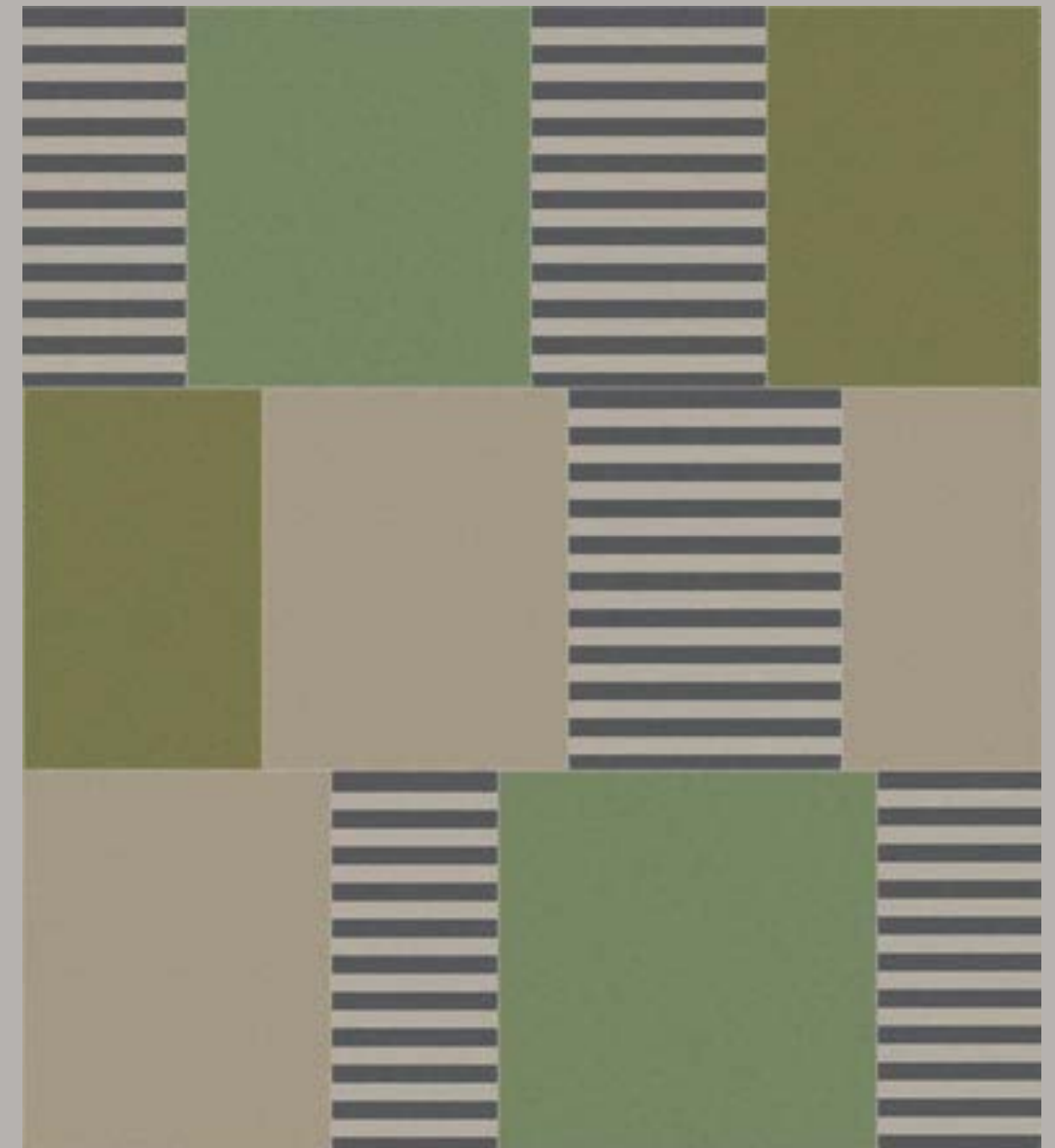
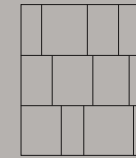




Multi Block Blue
Ref: T18068-20-6

Approx 280cm wide x 350cm long / 9'2" x 11'5"
20 Rectangles in 6 colours
Colour combination: Denim, Grey, Gris, Lapis, Pewter and Taupe
Stitch colour: Platinum

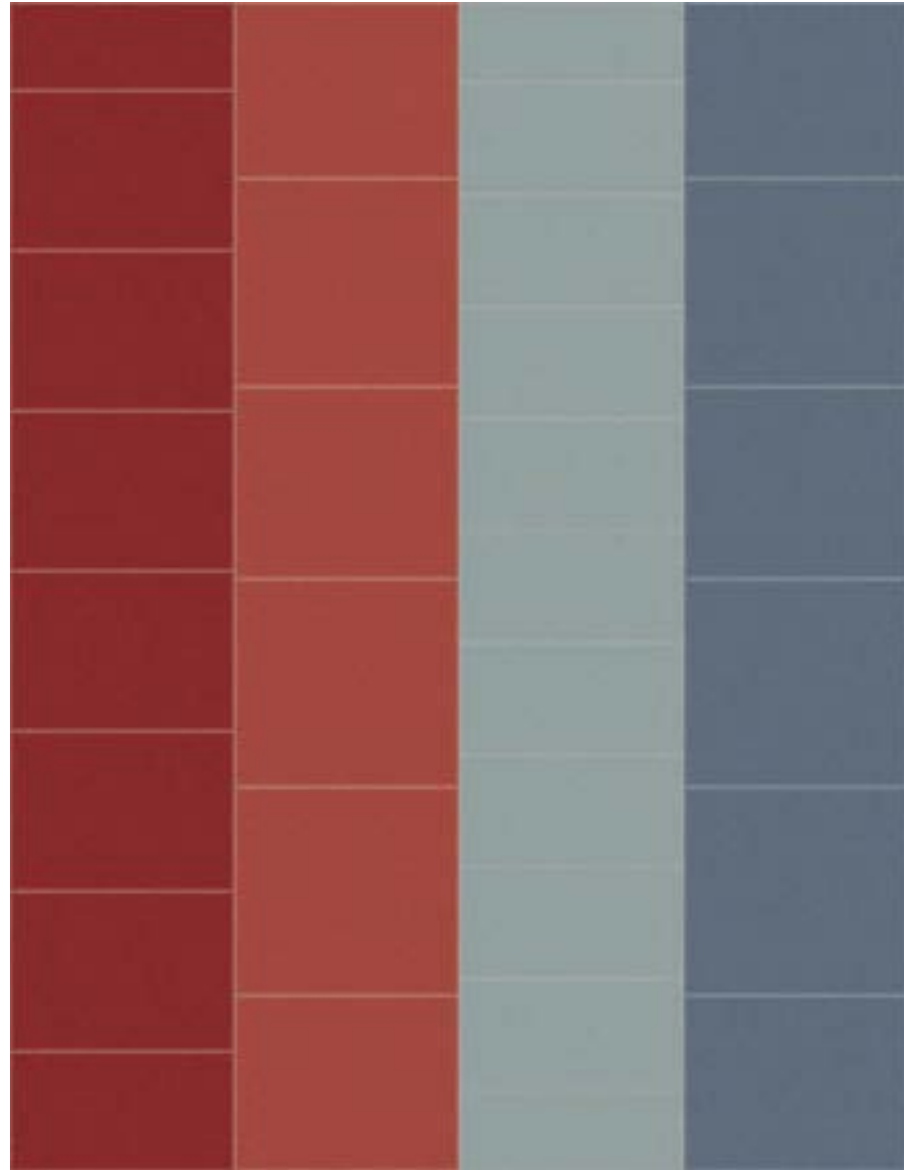
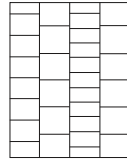
*All Tapis d'Avignon rugs are made to order
Size, colour and design can be customised
Please see website for more details*



Optical Block Laurel
Ref: T19072-12-4

Approx 280cm wide x 315cm long / 9'2" x 10'4"
12 Rectangles in 4 colours
Colour combination: Laurel, Olive, Custom Stripe and Taupe
Stitch colour: Fawn

*All Tapis d'Avignon rugs are made to order
Size, colour and design can be customised
Please see website for more details*



Offset Stripe Pimento & Grey

Ref: T18053-32-4

Approx 286cm wide x 365cm long / 9' x 12'
32 Rectangles in 4 colours
Colour combination: Pimento, Rust, Gris and Pewter
Stitch colour: Platinum

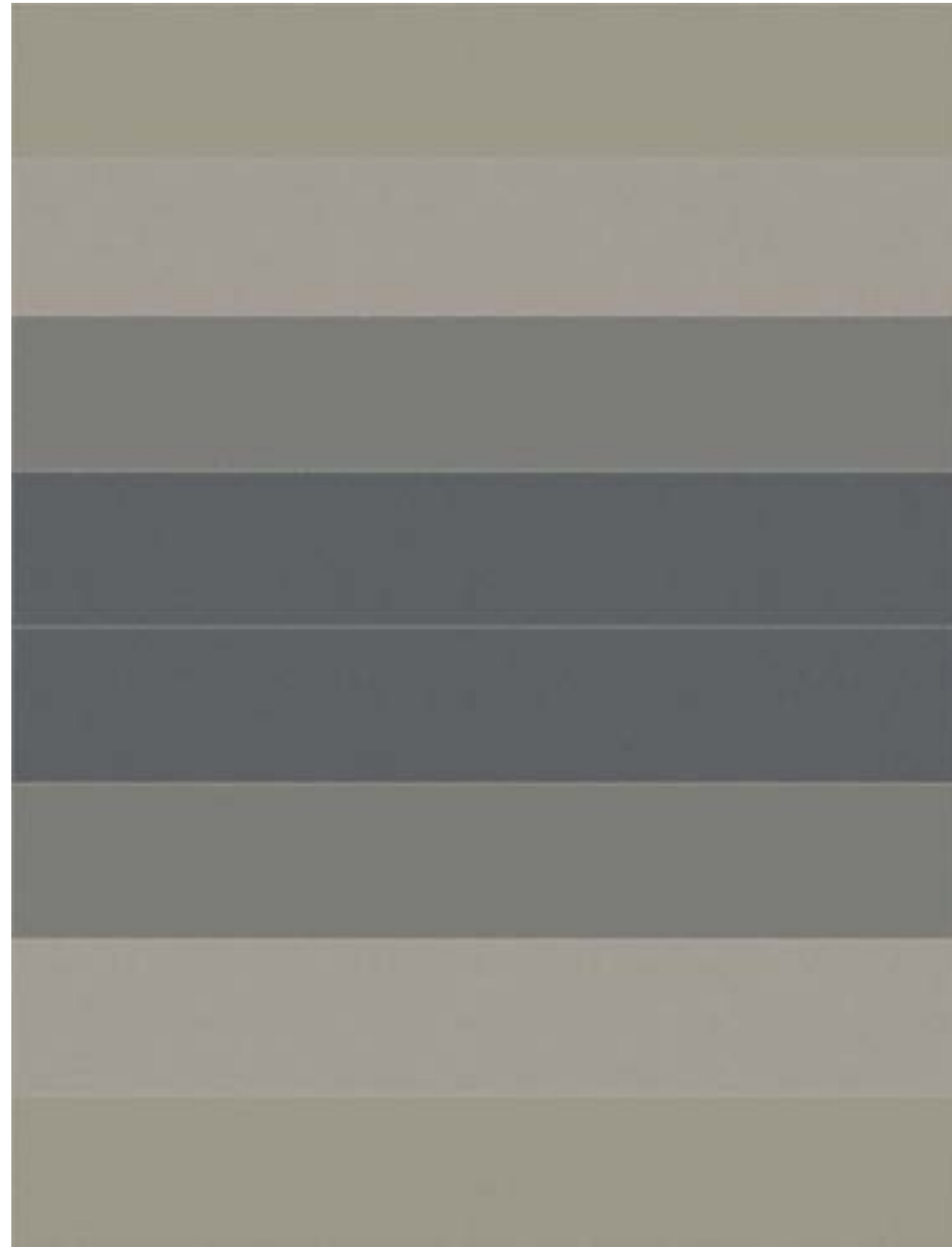
*All Tapis d'Avignon rugs are made to order
Size, colour and design can be customised
Please see website for more details*



Bar Multi

Ref: T17011-28-5

Approx 200cm wide x 250cm long / 6'6" x 8'2"



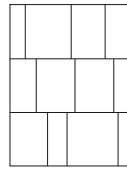
Stripe Pewter
Ref: T19125-8-4

Approx 488cm wide x 365cm long / 16' x 12'
8 Stripes in 4 colours
Colour combination: Grey, Pewter, Silver and Taupe
Stitch colour: Fawn

*All Tapis d'Avignon rugs are made to order
Size, colour and design can be customised
Please see website for more details*



Checkerboard Denim Blue
Ref: T17041-24-4
Approx 286cm wide x 365cm long / 9' x 12'



Offset Block Multi
Ref: T17081-12-7

Approx 286cm wide x 365cm long / 9' x 12'
12 Rectangles in 7 colours

Colour combination: Coral, Gris, Mulberry, Pewter, Pimento, Raspberry and Rust
Stitch colour: Fawn

*All Tapis d'Avignon rugs are made to order
Size, colour and design can be customised
Please see website for more details*



Multi Square Blush
Ref: T16121-15-3

Approx 175cm wide x 245cm long / 5'9" x 8'2"



All Tapis d'Avignon rugs are made from a combination of smaller, individual pieces joined and edged with a decorative blanket stitch.

Combine colours from our palette to build endless combinations in geometric designs. Our rugs can be sized and customised to suit any space, our design team will work with you to create something unique.

We use a decorative joining stitch that either tones or contrasts with the ground colour.



rug index

Avon Indigo p4
 Broadcloth Russet (Shetland) p61
 Chartres Marine p5
 Charleston Catkin p6
 Charleston Fossil p7
 Chatham Azure p8
 Chatham Multi p9
 Dart Crimson p10
 Dart Ground Light Grey (Shetland) p63
 Dart Ground Otter p10
 Eldon Airforce, Grey & Chestnut p12
 Fairfax & Hayward Prism p14
 Fairfax Prism p15
 Fitzroy Black p16
 Fitzroy Bright p17
 Fitzroy Midnight p18
 Finchley Stone p20
 Flaxman Stone p22
 Flaxman Stone p23
 Franklin Copper p24
 Franklin Indigo p25
 Halle Soft Black & Hanover Oatmeal p26
 Hanbury Stone p2
 Isis Reed p27
 Ixworth Lamp Black & Charleston Fossil p28
 Ixworth Ochre p29
 Kasuri Cherry p30
 Kasuri Indigo p31
 Kobe Jade p33
 Kobe Lantern p32
 Kyoto Blossom p34
 Kyoto Lantern p35
 Lennox Clover p36
 Lennox Shark p38
 Lennox Steel p37
 Malton Cinder p41
 Malton & George Black p40
 Masai Indigo p42
 Masai Madder p43
 Pelham Gold p45
 Pelham Slate & Vernon Chalk p44
 Sudbury Light Grey (Shetland) p60
 Swanson Celadon p47
 Swanson Light Grey (Shetland) p62
 Swanson Juniper p46
 Switch Fraise p48
 Switch French Grey p50

Trent & Ashby Airforce p53
 Trent Shale p52
 Vernon Slate p54
 Vernon Teal p55
 Westport Indigo p3, 56
 Westport Lichen p57
 Whitman Soft Black & Light Red p58

TAPIS D'AVIGNON RUGS

Bar Multi p73
 Checkerboard Raspberry p69
 Checkerboard Denim Blue p75
 Multi Block Blue p70
 Multi Square Blush p77
 Offset Block Grey p68
 Offset Block Multi p76
 Offset Stripe Pimento & Grey p72
 Optical Block Laurel p71
 Stripe Pewter p74

For more information please visit our website www.rogeroates.com or speak to one of our sales team on:

**+44 (0)1531 632718 or
 +44 (0)20 7351 2288**

Owing to the printing process the colour of the actual product may vary slightly from the photographs. It is recommended that you request a sample for colour accuracy.

All copyright, design rights and other intellectual property rights on our products remain the property of Roger Oates Design Co Ltd and any infringement of this copyright is an offence and appropriate action will be taken.

Roger Oates Design Co Ltd is a member of ACID (Anti Copying in Design).

