

Amtico *Décor* ×  National Trust



A perfect pairing  
Collection 2022

Uniquely **amtico**



Victorian Star Small Chester with Border 2

A perfect pairing. Captivated by the finer details of our nation's heritage. Amtico Décor and the National Trust is a harmonious collaboration celebrating the admired qualities of traditional design, reimagined for the modern home.

Amtico *Décor* ×  National Trust



Victorian Star Small Chester with Border 2

# History *in the* making...



Decorative geometric designs combine with a curated palette to create this artisan collection of statement flooring. The designs seamlessly blend traditional style with a contemporary look and feel, creating beautifully timeless flooring for any space.

Inspired by historic designs and patterns found at places cared for by the National Trust, this collection carries the grandeur and heritage of the past into modern homes.

For

everyone,

for ever



National  
Trust

Amtico *Décor* ×  National Trust

UK sales of this collection over the next three years will help the National Trust to look after the 500 places, 780 miles of coastline and 250,000 hectares of land in its care. Some of these projects will help to establish and conserve woodlands, create new habitats for wildlife and protect biodiversity.

Victorian Star Large Canterbury with Border 2 and a Mitred Corner in Brushed Oak and Dark Walnut

# Victorian Star Small

Assembled Tile



228.6mm

228.6mm

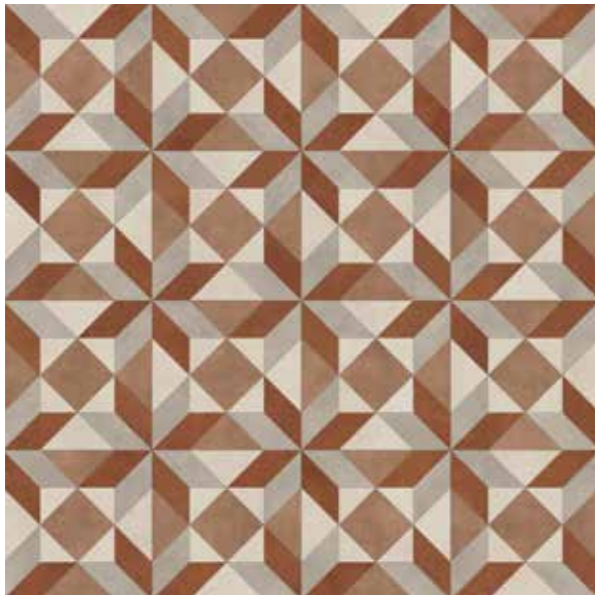
Evocative of Victorian flooring, with its considered colour and sharp geometric design, Victorian Star Small creates an iconic look. Available in four contrasting colourways, Victorian Star Small is designed to work flawlessly with the original Décor collection, offering the perfect statement floor for any space.



Victorian Star Small Edison paired with Stucco Putty

Amtico Décor x National Trust Collection

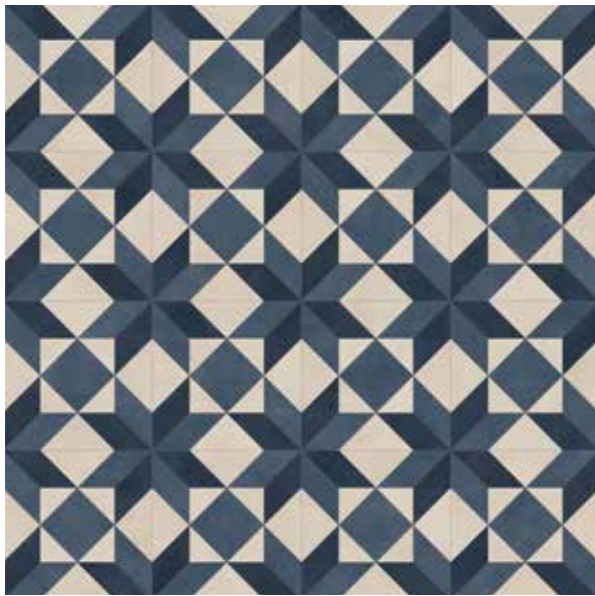
Amtico Décor x National Trust Collection



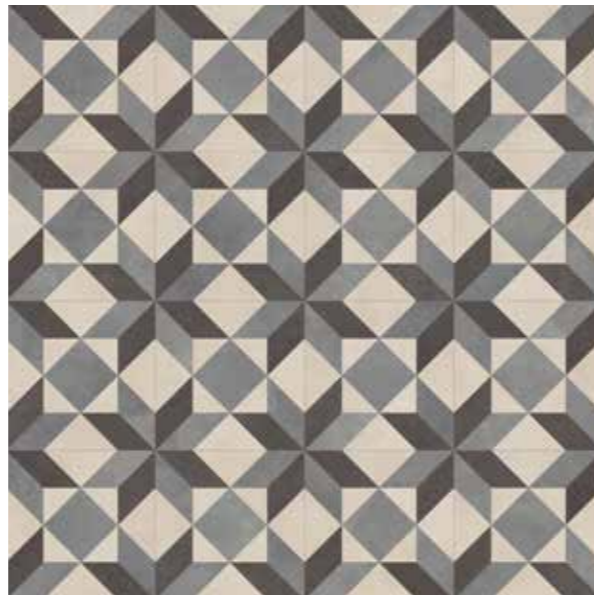
**Victorian Star Small Edison - DC468**  
Products used: Stucco Clay, Stucco Quartz, Encaustic Jasper & Stucco Putty



**Victorian Star Small Otto - DC471**  
Products used: Graphite Slate & Onyx Marble



**Victorian Star Small Clarence - DC469**  
Products used: Stucco Flax, Stucco Indigo & Stucco Quartz



**Victorian Star Small Chester - DC470**  
Products used: Stucco Quartz, Modernist Lintel & Diffusion Charcoal



Victorian Star Small Chester with Border 2

Amtico Décor x National Trust Collection

# Victorian Star Large

Assembled Tile



304.8mm

304.8mm

Carrying timeless elegance and the organic beauty of wood, Victorian Star Large is available in two premium grains from the Signature collection. Reflecting historic techniques with realistic contours and an intricate star pattern, this statement floor will add character to your home.



Victorian Star Large York

Amtico Décor x National Trust Collection



Victorian Star Large Canterbury with Border 2 and a Mitred Corner in Brushed Oak and Dark Walnut

Amtico Décor x National Trust Design Stories...

Victorian Star Large. Sophisticated and versatile, York Oak is a smooth classic mid-tone and Brushed Oak offers a rich, rustic hue. Both colourways carry movement and depth through the beautiful statement pattern.



**Victorian Star Large York - DC473**  
Product used: York Oak



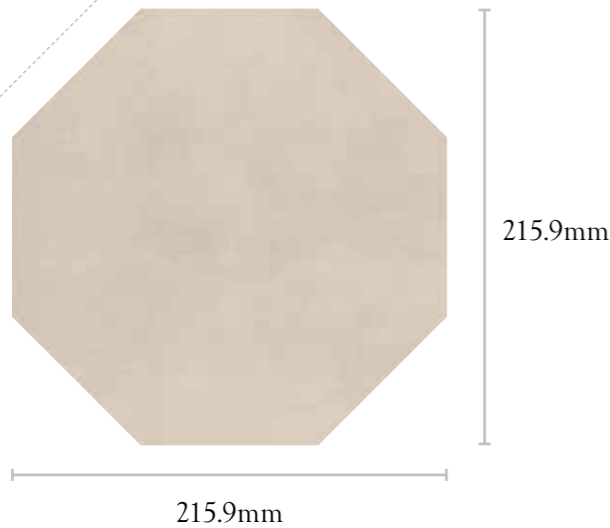
**Victorian Star Large Canterbury - DC472**  
Product used: Brushed Oak

# Octagon

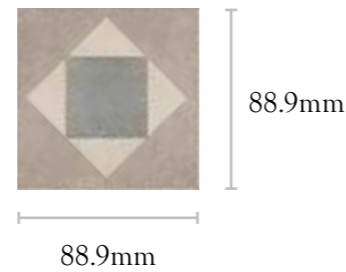
# Key

Inspired by the aesthetics of the Georgian era, Octagon Key reflects the architectural design of the classic keystone look. Available in four charming colourways, the motif design defines spaces with its delicate detailing.

Octagon Tile



Key

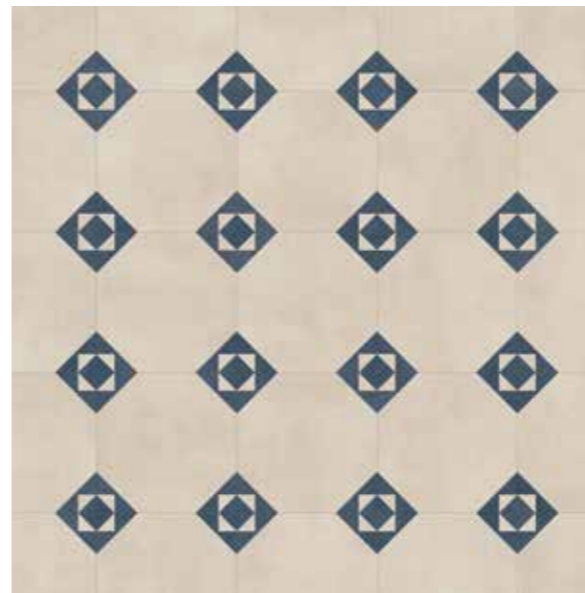


Octagon Key Grace with Border 1 and a Mitred Corner in Stucco Quartz and Stucco Pebble



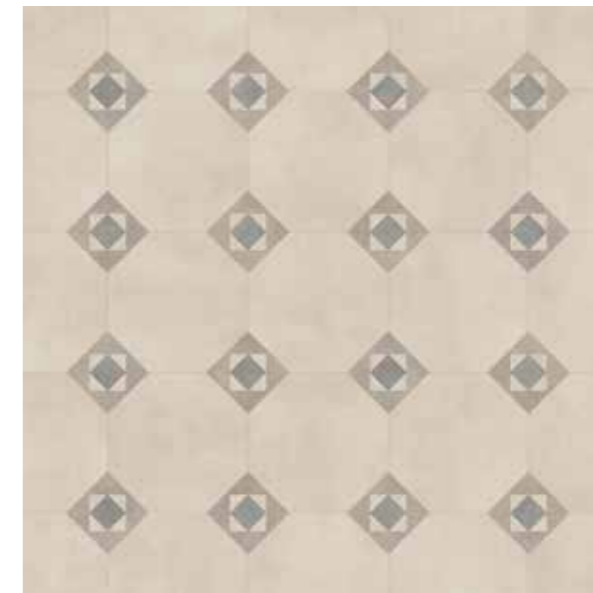
Octagon Key Rayne with Marble Onyx perimeter

Amtico Décor x National Trust Collection



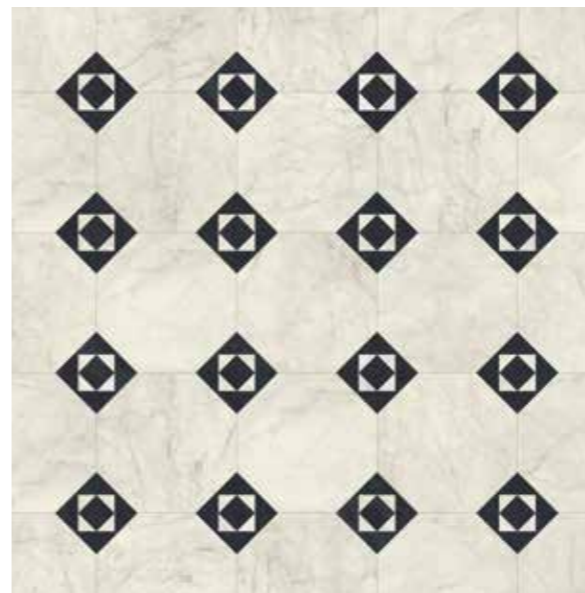
Octagon Key Alma - DC476

Products used: Stucco Quartz & Stucco Flax



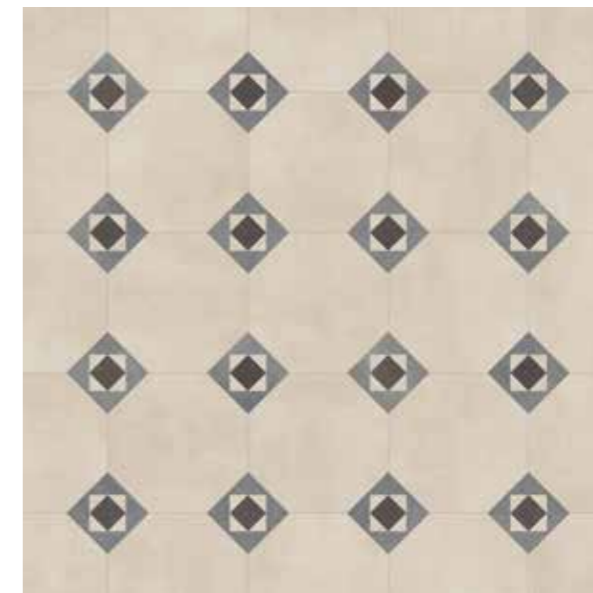
Octagon Key Grace - DC474

Products used: Stucco Quartz, Stucco Putty & Stucco Pebble



Octagon Key Rayne - DC477

Products used: Graphite Slate & Onyx Marble



Octagon Key Briar - DC475

Products used: Stucco Quartz, Modernist Lintel & Diffusion Charcoal

Finishing Touches...

## Introducing Décor borders and corners

Designed to enhance and finish off a room effortlessly, Décor borders and corners add stylish definition and finesse to any floor. Adding that all-important finishing touch for truly beautiful decorative styling, Décor's collection of specially designed borders complement and contrast central Décor tile designs.

### Border 1

Border AROB4000  
89 x 914mm

Products shown:  
A = Stucco Quartz  
B = Diffusion Charcoal  
C = Diffusion Charcoal

Border 1 with  
Feature Corner  
AROC4002



Border 1 with  
Mitred Corner



Border 1 with  
Square Corner  
AROC4001

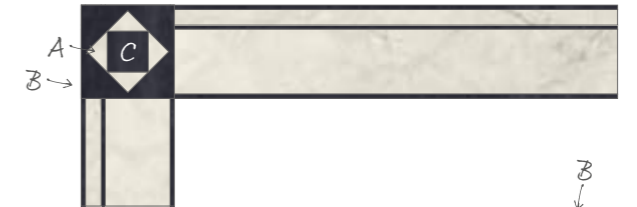


### Border 2

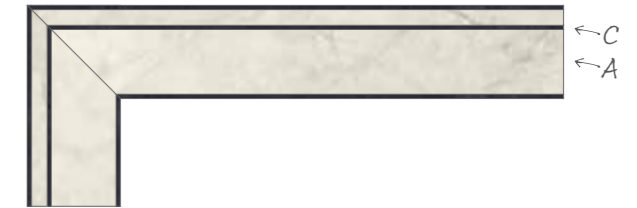
Border AROB4001  
89 x 914mm

Products shown:  
A = Onyx Marble  
B = Graphite Slate  
C = Graphite Slate

Border 2 with  
Feature Corner  
AROC4002



Border 2 with  
Mitred Corner



### Border 3

Border AROB4002  
89 x 914mm

Products shown:  
A = Encaustic Jasper  
B = Graphite Slate  
C = Graphite Slate

Border 3 with  
Feature Corner  
AROC4002



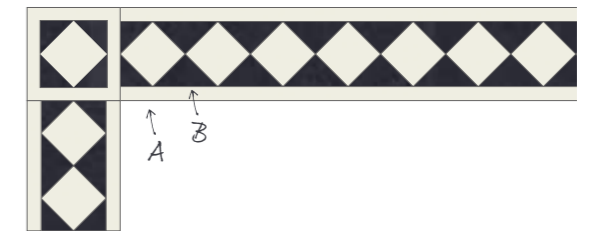
Border 3 with  
Mitred Corner



### Bevelled Diamond

Border AROB270B and Corner AROC27SB  
76 x 914mm

Products shown:  
A = Pure Plain White  
B = Graphite Slate





Victorian Star Large York

**Your local retailer**  
Your local Amtico flooring specialist can help make your flooring dreams a reality.

**Order samples**  
Order free samples in advance to see how they work in your space.

**Technical support**  
For advice on installation, preparation and care for your floor, call 02476 861 409 or email [technical.support@amtico.com](mailto:technical.support@amtico.com)

[amtico.com](http://amtico.com)  
0121 745 0800

For more inspiration  
visit *amtico.com*

Amtico International

UK & European Sales

Solar Park

Southside

Solihull

West Midlands

B90 4SH

Tel: 0121 745 0800

Email: [info@amtico.com](mailto:info@amtico.com)

MLIT.BRU.B.S.DECNT

**amtico**  
flooring